



CATALOGUE NO. 8635.0

EMBARGOED UNTIL 11.30 A.M. 27 JUNE 1994

TOURIST ACCOMMODATION, AUSTRALIA, MARCH QUARTER 1994

MAIN FEATURES

MARCH QUARTER 1994
COMPARED WITH
MARCH QUARTER 1993

HOTELS, MOTELS AND GUEST HOUSES

- Rooms available increased slightly overall to 166,262. Tasmania and Northern Territory showed the largest relative increases. Small decreases were recorded for New South Wales, South Australia and Australian Capital Territory.
- Room nights occupied increased by 6.7 per cent to 8.4 million overall with increases in all States/Territories, including 16.6 per cent in the Northern Territory, 9.5 per cent in Western Australia, 7.3 per cent in New South Wales and 6.3 per cent in Queensland.
- The room occupancy rate overall rose from 52.5 per cent to 55.9 per cent, with four star and five star rated establishments recording increases of 4.4 percentage points and 7.8 percentage points respectively.
- Guest nights increased by 6.6 per cent to 15.0 million and the bed occupancy rate increased from 32.9 per cent to 34.8 per cent.
- Guest arrivals increased by 8.5 per cent to 7.3 million while average length of stay fell slightly 2.0 days overall, ranging from 2.5 days for Western Australia to 1.8 days for Northern Territory and Tasmania. By star rating, average length of stay ranged from 2.6 days for five star to 1.7 days for two star establishments.
- Takings from accommodation increased by 11.3 per cent from \$632.5m to \$703.9m while average takings per room night occupied increased overall from \$81 to \$84, ranging from \$89 for Queensland to \$72 for Tasmania.
- Employment (full-time and part-time) increased by 1.6 per cent from 100,273 persons to 101,873 persons.

HOLIDAY FLATS, UNITS AND HOUSES

- The number of units, etc. available for short-term letting increased by 3.2 per cent to 35,410 while unit nights occupied increased by 5.4 per cent to 1.78 million.
- The unit occupancy rate increased from 54.8 per cent to 56.1 per cent.
- Unit lettings increased by 8.3 per cent to 0.31 million but average length of stay fell slightly to 5.7 days.
- Accommodation takings increased by 10.0 per cent from \$105.6m to \$116.2m while average takings per unit night occupied increased from \$62 to \$65.

CARAVAN PARKS (SHORT-TERM AND LONG-TERM)

- Capacity available increased by 0.4 per cent to 287,578 powered and unpowered sites and cabins, etc. of which 47,591 sites, etc. (16.5 per cent) were occupied by long-term residents, 44,465 sites (15.5 per cent) were permanently reserved but only casually occupied by their tenants and an average of 37,945 sites (13.2 per cent) were occupied by other short-term guests.
- Site nights occupied increased by 1.5 per cent to 11.7 million and the site occupancy rate rose from 44.7 per cent to 45.2 per cent.
- Takings from accommodation increased by 5.5 per cent from \$111.0m to \$117.1m at an average of \$10 per site night occupied.

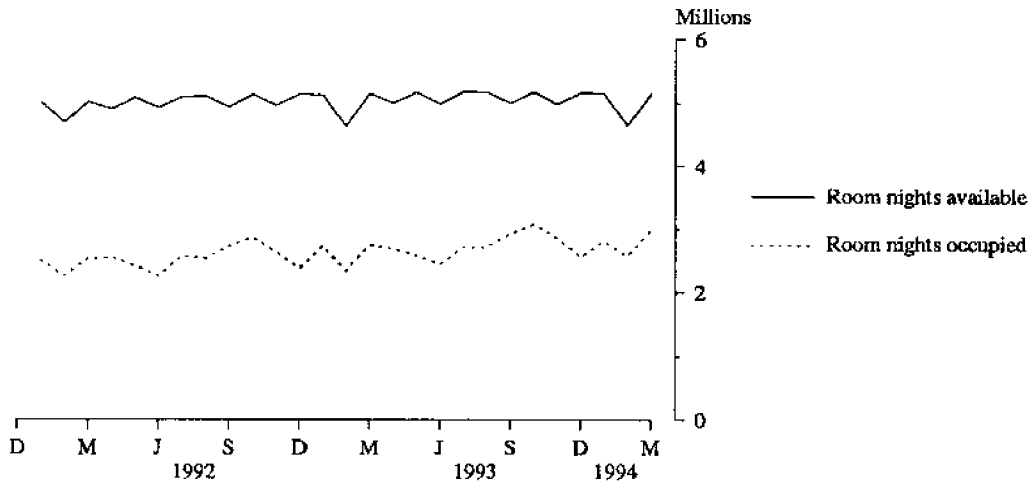
VISITOR HOSTELS

- Bed spaces available increased by 3.2 per cent from 24,943 to 25,748 and guest nights increased by 4.3 per cent to 1.04 million.
- The bed occupancy rate increased slightly from 44.8 per cent to 45.3 per cent.
- Accommodation takings increased by 9.2 per cent to \$12.6m at an average of \$12 per guest night.

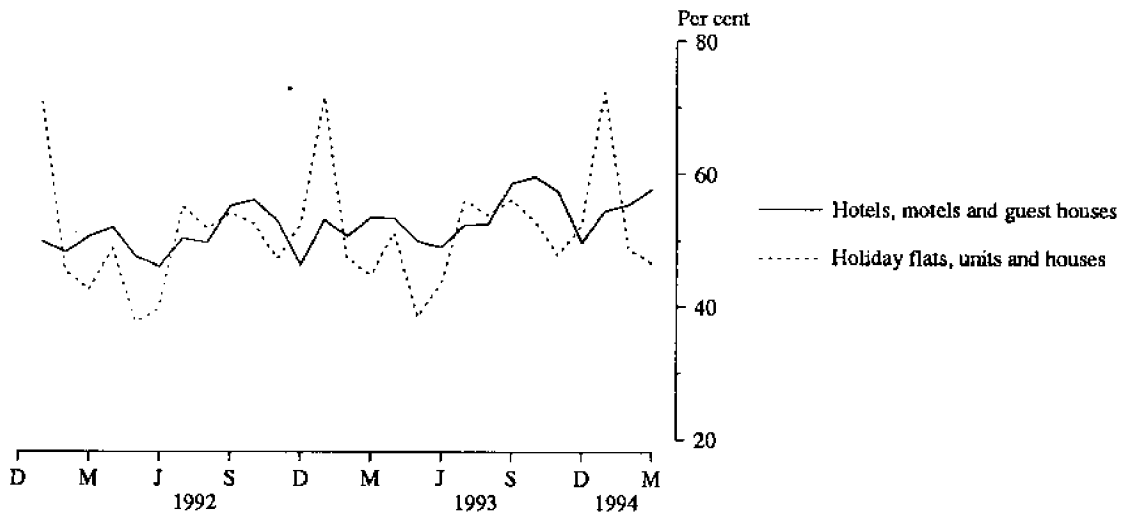
INQUIRIES

- *for further information about statistics in this publication and the availability of related unpublished statistics, contact John Alexander on Brisbane (07) 222 6215 or any ABS office.*
- *for information about other ABS statistics and services, refer to the back page of this publication.*

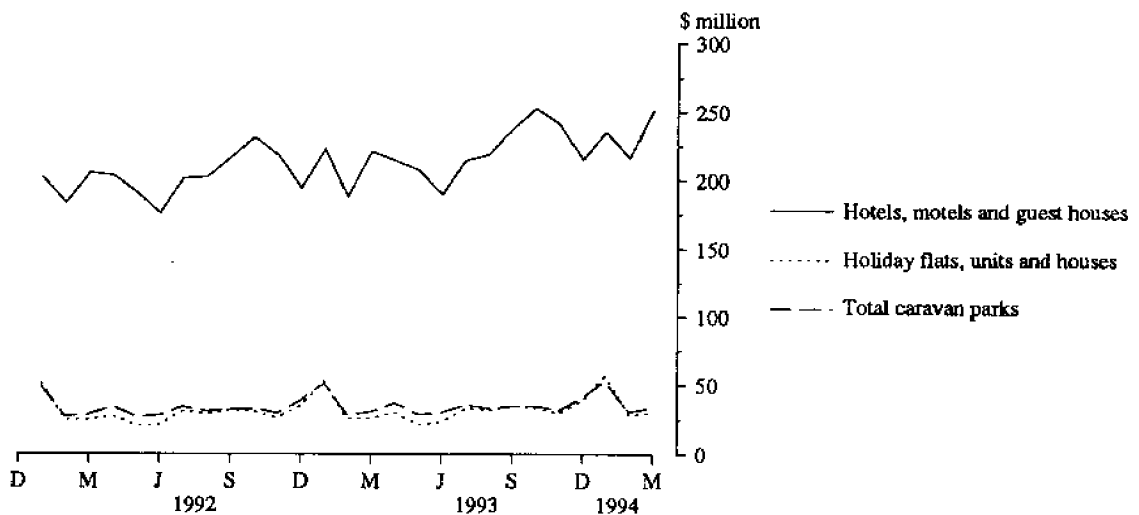
**MONTHLY ROOM NIGHTS AVAILABLE AND OCCUPIED:
HOTELS, MOTELS AND GUEST HOUSES,
AUSTRALIA**



**MONTHLY ROOM OCCUPANCY RATES,
AUSTRALIA**



**MONTHLY TAKINGS FROM ACCOMMODATION,
AUSTRALIA**



RELEASE OF SECOND ISSUE OF *TOURISM INDICATORS*

The ABS recently introduced a new quarterly tourism statistics publication, *Tourism Indicators (Catalogue 8634.0)*. The second issue, relating to the December quarter 1993, has now been published.

Tourism Indicators brings together information from a variety of statistical collections, particularly the Survey of Tourist Accommodation (STA) and the Overseas Arrivals and Departures (OAD). The information included is not published elsewhere, and *Tourism Indicators* is designed to complement the data in those collections' specific publications.

Each quarter the publication includes the latest data on:

Hotels, Motels and Guest Houses, for each State/Territory, including:

- Seasonally adjusted and trend data for Room Nights Occupied;
- Seasonally adjusted and trend data for Takings at current and constant prices;
- Average nightly number of rooms occupied per establishment;
- Average nightly number of guests per occupied room;
- Average takings per establishment, per occupied room and per guest.

International visitor arrivals, including:

- Seasonally adjusted and trend data by country of residence;
- Arrivals by country of embarkation and port of arrival;
- Length of stay by State/Territory in which most time was spent;
- Purpose of journey, length of stay, age, and port of arrival for visitors from Japan, New Zealand, U.K. and U.S.A.

Australians travelling overseas, including:

- Main purpose of journey by country of intended stay;
- Country of disembarkation by port of departure.

Tourism Indicators also includes commentary and analysis, as well as other statistics of interest to the tourism industry. For example, the latest issue looks at:

- the trend of average takings per room night occupied, in current and constant prices, over the last four years;
- a profile of international visitors focusing on business and convention visitors; and,
- newly collected data on convention/meeting facilities in hotels, motels and guest houses.

We believe that this new publication will be an invaluable tool to researchers and managers in the industry by providing an insight into the industry not previously available.

The *Tourism Indicators* publication can be purchased from any ABS bookshop at a cost of \$30.00 per issue. Annual subscriptions can also be arranged by phoning (008) 020 608, free of charge.

For further information about the *Tourism Indicators*, contact Andy Harris on phone (06) 252 5452.

TABLE 1 — SUMMARY OF HOTELS, MOTELS AND GUEST HOUSES WITH FACILITIES, AUSTRALIA (a)

| Particulars | Unit | Quarter ended | | | | Year ended | | | |
|--|----------|---------------|------------|-----------|----------------|---------------|------------|------------|------------|
| | | December 1992 | March 1993 | June 1993 | September 1993 | December 1993 | March 1994 | March 1993 | March 1994 |
| LICENSED HOTELS WITH FACILITIES | | | | | | | | | |
| Establishments | No. | 1,187 | 1,183 | 1,196 | 1,185 | 1,138 | 1,131 | .. | .. |
| Guest rooms | No. | 64,819 | 65,114 | 66,305 | 66,348 | 66,517 | 66,386 | .. | .. |
| Bed spaces | No. | 169,734 | 171,024 | 174,671 | 174,935 | 175,476 | 175,508 | .. | .. |
| Employment (persons) | No. | 63,298 | 62,846 | 62,104 | 64,208 | 65,735 | 65,257 | .. | .. |
| Room nights occupied | '000 | 3,261.1 | 3,228.5 | 3,151.0 | 3,422.0 | 3,725.3 | 3,647.9 | 12,432.1 | 13,946.2 |
| Room occupancy rate | per cent | 54.9 | 55.4 | 52.3 | 56.1 | 61.0 | 61.1 | 53.0 | 57.6 |
| Guest nights | '000 | 5,452.8 | 5,415.1 | 5,171.1 | 5,695.1 | 6,261.5 | 6,145.9 | 20,647.2 | 23,273.6 |
| Bed occupancy rate | per cent | 35.1 | 35.4 | 32.6 | 35.4 | 39.0 | 38.9 | 33.5 | 36.5 |
| Guest arrivals | '000 | 2,337.2 | 2,258.3 | 2,197.1 | 2,447.5 | 2,715.2 | 2,673.6 | 8,891.7 | 10,033.5 |
| Average length of stay | days | 2.3 | 2.4 | 2.4 | 2.3 | 2.3 | 2.3 | 2.3 | 2.3 |
| Takings from accommodation | \$'000 | 339,658 | 326,653 | 315,612 | 344,815 | 391,787 | 385,605 | 1,260,222 | 1,437,820 |
| MOTELS AND GUEST HOUSES WITH FACILITIES | | | | | | | | | |
| Establishments | No. | 3,710 | 3,709 | 3,750 | 3,739 | 3,694 | 3,684 | .. | .. |
| Guest rooms | No. | 101,778 | 101,081 | 100,701 | 100,670 | 100,226 | 99,876 | .. | .. |
| Bed spaces | No. | 306,360 | 304,537 | 304,225 | 304,200 | 302,890 | 302,063 | .. | .. |
| Employment (persons) | No. | 37,534 | 37,427 | 36,387 | 37,236 | 36,843 | 36,616 | .. | .. |
| Room nights occupied | '000 | 4,638.4 | 4,598.8 | 4,555.6 | 4,938.5 | 4,777.8 | 4,707.0 | 18,377.7 | 18,979.0 |
| Room occupancy rate | per cent | 49.8 | 50.6 | 49.8 | 53.4 | 51.9 | 52.4 | 49.9 | 51.9 |
| Guest nights | '000 | 8,495.0 | 8,615.9 | 8,206.1 | 9,036.9 | 8,755.5 | 8,815.4 | 33,694.9 | 34,813.9 |
| Bed occupancy rate | per cent | 30.3 | 31.5 | 29.7 | 32.3 | 31.5 | 32.5 | 30.4 | 31.5 |
| Guest arrivals | '000 | 4,544.6 | 4,481.7 | 4,439.2 | 4,858.1 | 4,712.8 | 4,641.1 | 17,990.7 | 18,651.2 |
| Average length of stay | days | 1.9 | 1.9 | 1.8 | 1.9 | 1.9 | 1.9 | 1.9 | 1.9 |
| Takings from accommodation | \$'000 | 305,328 | 305,827 | 296,315 | 327,348 | 317,754 | 318,309 | 1,209,046 | 1,259,727 |
| TOTAL HOTELS, MOTELS AND GUEST HOUSES WITH FACILITIES | | | | | | | | | |
| Establishments | No. | 4,897 | 4,892 | 4,946 | 4,924 | 4,832 | 4,815 | .. | .. |
| Guest rooms | No. | 166,597 | 166,195 | 167,006 | 167,018 | 166,743 | 166,262 | .. | .. |
| Bed spaces | No. | 476,094 | 475,561 | 478,896 | 479,135 | 478,366 | 477,571 | .. | .. |
| Employment (persons) | No. | 100,832 | 100,273 | 98,491 | 101,444 | 102,578 | 101,873 | .. | .. |
| Room nights occupied | '000 | 7,899.5 | 7,827.3 | 7,706.6 | 8,360.5 | 8,503.1 | 8,355.0 | 30,809.8 | 32,925.2 |
| Room occupancy rate | per cent | 51.8 | 52.5 | 50.8 | 54.5 | 55.5 | 55.9 | 51.1 | 54.2 |
| Guest nights | '000 | 13,947.8 | 14,031.0 | 13,377.2 | 14,732.0 | 15,017.0 | 14,961.3 | 54,342.1 | 58,087.5 |
| Bed occupancy rate | per cent | 32.0 | 32.9 | 30.7 | 33.5 | 34.2 | 34.8 | 31.5 | 33.3 |
| Guest arrivals | '000 | 6,881.8 | 6,740.0 | 6,636.3 | 7,305.6 | 7,428.1 | 7,314.7 | 26,882.4 | 28,684.7 |
| Average length of stay | days | 2.0 | 2.1 | 2.0 | 2.0 | 2.0 | 2.0 | 2.0 | 2.0 |
| Takings from accommodation | \$'000 | 644,986 | 632,480 | 611,927 | 672,163 | 709,542 | 703,914 | 2,469,268 | 2,697,546 |

(a) From December quarter 1993, establishments with fewer than 5 rooms have been formally excluded from the scope of this collection. See Explanatory Note 2 (page 20).

TABLE 2 — SUMMARY OF CARAVAN PARKS, AUSTRALIA

| Particulars | Unit | Quarter ended | | | | Year ended | | | |
|--------------------------------------|------------|----------------|----------------|----------------|----------------|----------------|----------------|------------|------------|
| | | December 1992 | March 1993 | June 1993 | September 1993 | December 1993 | March 1994 | March 1993 | March 1994 |
| SHORT-TERM CARAVAN PARKS | | | | | | | | | |
| Establishments | No. | 1,552 | 1,547 | 1,552 | 1,609 | 1,621 | 1,621 | .. | .. |
| Capacity | | | | | | | | | |
| On-site vans | No. | 9,068 | 8,675 | 8,615 | 8,828 | 8,856 | 8,846 | .. | .. |
| Other powered sites | No. | 111,341 | 111,499 | 112,098 | 118,312 | 118,829 | 119,046 | .. | .. |
| Unpowered sites | No. | 52,942 | 52,087 | 51,814 | 52,310 | 52,415 | 51,861 | .. | .. |
| Cabins, etc. | No. | 8,213 | 8,359 | 8,549 | 8,669 | 8,834 | 8,966 | .. | .. |
| <i>Total capacity</i> | <i>No.</i> | <i>181,564</i> | <i>180,620</i> | <i>181,076</i> | <i>188,119</i> | <i>188,934</i> | <i>188,719</i> | .. | .. |
| Sites occupied by long-term guests | No. | 7,863 | 7,913 | 8,265 | 9,365 | 9,262 | 9,386 | .. | .. |
| Other sites permanently reserved (a) | No. | 35,547 | 37,309 | 36,952 | 40,539 | 41,330 | 41,954 | .. | .. |
| Employment (persons) | No. | 5,655 | 5,526 | 5,427 | 5,563 | 5,867 | 5,813 | .. | .. |
| Site nights occupied (a) | '000 | 6,023.6 | 6,615.5 | 6,043.6 | 6,741.8 | 6,709.4 | 7,251.0 | (a) | 26,745.8 |
| Site occupancy rate (a) | per cent | 36.2 | 40.7 | 36.7 | 39.0 | 38.8 | 42.7 | (a) | 39.3 |
| Takings from accommodation | \$'000 | 55,023 | 62,977 | 49,384 | 55,807 | 61,678 | 69,484 | 218,245 | 236,353 |
| LONG-TERM CARAVAN PARKS | | | | | | | | | |
| Establishments | No. | 1,130 | 1,134 | 1,129 | 1,086 | 1,083 | 1,080 | .. | .. |
| Capacity | | | | | | | | | |
| On-site vans | No. | 12,167 | 12,253 | 12,202 | 12,070 | 12,103 | 12,221 | .. | .. |
| Other powered sites | No. | 69,707 | 70,051 | 69,838 | 64,695 | 64,271 | 63,932 | .. | .. |
| Unpowered sites | No. | 17,480 | 17,635 | 17,561 | 16,888 | 16,855 | 16,428 | .. | .. |
| Cabins, etc. | No. | 5,816 | 5,901 | 5,996 | 6,094 | 6,137 | 6,278 | .. | .. |
| <i>Total capacity</i> | <i>No.</i> | <i>105,170</i> | <i>105,840</i> | <i>105,597</i> | <i>99,747</i> | <i>99,366</i> | <i>98,859</i> | .. | .. |
| Sites occupied by long-term guests | No. | 39,696 | 40,007 | 39,660 | 38,687 | 38,065 | 38,205 | .. | .. |
| Other sites permanently reserved (a) | No. | 5,803 | 5,721 | 5,575 | 2,255 | 2,474 | 2,511 | .. | .. |
| Employment (persons) | No. | 3,949 | 3,962 | 3,906 | 3,777 | 3,827 | 3,845 | .. | .. |
| Site nights occupied (a) | '000 | 4,960.6 | 4,909.2 | 4,925.7 | 4,700.6 | 4,486.9 | 4,449.1 | (a) | 18,562.3 |
| Site occupancy rate (a) | per cent | 51.3 | 51.6 | 51.3 | 51.2 | 49.1 | 50.0 | (a) | 50.4 |
| Takings from accommodation | \$'000 | 47,313 | 47,990 | 47,587 | 48,567 | 46,827 | 47,613 | 184,032 | 190,594 |
| TOTAL CARAVAN PARKS | | | | | | | | | |
| Establishments | No. | 2,682 | 2,681 | 2,681 | 2,695 | 2,704 | 2,701 | .. | .. |
| Capacity | | | | | | | | | |
| On-site vans | No. | 21,235 | 20,928 | 20,817 | 20,898 | 20,959 | 21,067 | .. | .. |
| Other powered sites | No. | 181,048 | 181,550 | 181,936 | 183,007 | 183,100 | 182,978 | .. | .. |
| Unpowered sites | No. | 70,422 | 69,722 | 69,375 | 69,198 | 69,270 | 68,289 | .. | .. |
| Cabins, etc. | No. | 14,029 | 14,260 | 14,545 | 14,763 | 14,971 | 15,244 | .. | .. |
| <i>Total capacity</i> | <i>No.</i> | <i>286,734</i> | <i>286,460</i> | <i>286,673</i> | <i>287,866</i> | <i>288,300</i> | <i>287,578</i> | .. | .. |
| Sites occupied by long-term guests | No. | 47,559 | 47,920 | 47,925 | 48,052 | 47,327 | 47,591 | .. | .. |
| Other sites permanently reserved (a) | No. | 41,350 | 43,030 | 42,527 | 42,794 | 43,804 | 44,465 | .. | .. |
| Employment (persons) | No. | 9,604 | 9,488 | 9,333 | 9,340 | 9,694 | 9,658 | .. | .. |
| Site nights occupied (a) | '000 | 10,984.2 | 11,524.6 | 10,969.3 | 11,442.4 | 11,196.3 | 11,700.1 | (a) | 45,308.1 |
| Site occupancy rate (a) | per cent | 41.8 | 44.7 | 42.1 | 43.2 | 42.4 | 45.2 | (a) | 43.2 |
| Takings from accommodation | \$'000 | 102,335 | 110,967 | 96,971 | 104,374 | 108,504 | 117,097 | 402,277 | 426,946 |

(a) From September quarter 1992, caravan park sites etc. permanently reserved but only casually occupied by their tenants have been recorded continuously as site nights occupied irrespective of whether the tenants of individual sites were in residence on any particular night. See Explanatory Notes 11 and 14. Occupancy measures from September quarter 1992 are not therefore comparable with those from previous quarters.

TABLE 3 — SUMMARY OF HOLIDAY FLATS, UNITS AND HOUSES, AUSTRALIA

| Particulars | Unit | Quarter ended | | | | | | Year ended | |
|--------------------------------------|------------|---------------|---------------|---------------|----------------|---------------|---------------|------------|------------|
| | | December 1992 | March 1993 | June 1993 | September 1993 | December 1993 | March 1994 | March 1993 | March 1994 |
| Letting entities | No. | 1,425 | 1,446 | 1,440 | 1,453 | 1,493 | 1,491 | .. | .. |
| Flats, units and houses | | | | | | | | | |
| Single bedroom | No. | 7,712 | 7,773 | 7,665 | 7,733 | 7,986 | 7,848 | .. | .. |
| Multiple bedroom | No. | 26,263 | 26,548 | 26,110 | 26,726 | 27,500 | 27,562 | .. | .. |
| <i>Total flats, units and houses</i> | <i>No.</i> | <i>33,975</i> | <i>34,321</i> | <i>33,775</i> | <i>34,459</i> | <i>35,486</i> | <i>35,410</i> | .. | .. |
| Bed spaces | No. | 146,605 | 148,464 | 146,251 | 148,721 | 154,103 | 154,325 | .. | .. |
| Employment (persons) (a) | No. | 4,857 | 4,855 | 4,788 | 4,868 | 5,155 | 5,221 | .. | .. |
| Unit nights occupied | '000 | 1,586.0 | 1,690.3 | 1,362.1 | 1,750.8 | 1,663.6 | 1,781.8 | 6,186.0 | 6,558.2 |
| Unit occupancy rate | per cent | 50.8 | 54.8 | 44.3 | 55.3 | 51.1 | 56.1 | 50.4 | 51.7 |
| Unit lettings | '000 | 288.3 | 290.4 | 256.4 | 293.2 | 312.9 | 314.6 | 1,096.4 | 1,177.1 |
| Average length of stay | days | 5.5 | 5.8 | 5.3 | 6.0 | 5.3 | 5.7 | 5.6 | 5.6 |
| Takings from accommodation | \$'000 | 92,538 | 105,561 | 75,462 | 99,577 | 102,697 | 116,167 | 360,829 | 393,904 |

(a) Employment numbers exclude real estate agents and their employees.

TABLE 4 — SUMMARY OF VISITOR HOSTELS, AUSTRALIA

| Particulars | Unit | Quarter ended | | | | | | Year ended | |
|----------------------------|----------|---------------|------------|-----------|----------------|---------------|------------|------------|------------|
| | | December 1992 | March 1993 | June 1993 | September 1993 | December 1993 | March 1994 | March 1993 | March 1994 |
| Establishments | No. | 405 | 404 | 397 | 410 | 414 | 426 | .. | .. |
| Bed spaces | No. | 25,404 | 24,943 | 24,680 | 24,681 | 24,960 | 25,748 | .. | .. |
| Employment (persons) | No. | 1,497 | 1,480 | 1,462 | 1,487 | 1,508 | 1,535 | .. | .. |
| Guest nights | '000 | 996.5 | 1,000.2 | 881.8 | 994.9 | 989.3 | 1,042.9 | r 3,907.6 | 3,909.0 |
| Bed occupancy rate | per cent | 43.1 | 44.8 | 39.3 | 43.9 | 43.2 | 45.3 | r 43.4 | 42.9 |
| Guest arrivals | '000 | 358.1 | 364.1 | 335.1 | 376.5 | 364.3 | 408.6 | r 1,437.1 | 1,484.5 |
| Average length of stay | days | 2.8 | 2.7 | 2.6 | 2.6 | 2.7 | 2.6 | 2.7 | 2.6 |
| Takings from accommodation | \$'000 | 11,578 | 11,497 | 10,479 | 11,511 | 11,694 | 12,560 | r 45,027 | 46,244 |

TABLE 5 — HOTELS, MOTELS AND GUEST HOUSES WITH FACILITIES BY STAR GRADING (a)
NEW SOUTH WALES

| Particulars | Licensed hotels with facilities | Motels and guest houses | Star grading | | | | | Ungraded | Total |
|---|---------------------------------|-------------------------|--------------|--------|---------|---------|--------|----------|---------|
| | | | 1 | 2 | 3 | 4 | 5 | | |
| ESTABLISHMENTS, CAPACITY AND EMPLOYMENT | | | | | | | | | |
| <i>March quarter 1993—</i> | | | | | | | | | |
| Establishments | 279 | 1,455 | 43 | 604 | 728 | 110 | 19 | 230 | 1,734 |
| Guest rooms | 18,016 | 39,221 | 683 | 12,935 | 21,209 | 10,582 | 6,248 | 5,580 | 57,237 |
| Bed spaces | 45,351 | 118,743 | 1,759 | 39,215 | 63,625 | 30,543 | 13,888 | 15,064 | 164,094 |
| Employment (persons) | 15,287 | 15,031 | 329 | 4,874 | 8,390 | 7,296 | 6,086 | 3,343 | 30,318 |
| <i>March quarter 1994—</i> | | | | | | | | | |
| Establishments | 268 | 1,452 | 38 | 557 | 739 | 123 | 19 | 244 | 1,720 |
| Guest rooms | 18,531 | 38,238 | 564 | 11,278 | 21,703 | 11,712 | 5,716 | 5,796 | 56,769 |
| Bed spaces | 46,582 | 117,503 | 1,427 | 35,088 | 65,690 | 33,287 | 12,522 | 16,071 | 164,085 |
| Employment (persons) | 16,058 | 14,410 | 281 | 4,214 | 8,534 | 8,476 | 5,896 | 3,067 | 30,468 |
| ROOM NIGHTS OCCUPIED ('000) | | | | | | | | | |
| <i>March quarter 1993</i> | 880.1 | 1,807.7 | 23.6 | 510.9 | 1,022.0 | 596.0 | 362.9 | 172.4 | 2,687.8 |
| <i>1994—</i> | | | | | | | | | |
| January | 323.0 | 647.0 | 6.9 | 161.9 | 385.0 | 237.6 | 111.5 | 67.2 | 970.1 |
| February | 356.5 | 535.9 | 6.1 | 125.4 | 320.1 | 243.9 | 133.3 | 63.5 | 892.3 |
| March | 381.9 | 638.5 | 7.1 | 154.3 | 384.2 | 268.9 | 133.3 | 72.6 | 1,020.4 |
| <i>March quarter 1994</i> | 1,061.4 | 1,821.4 | 20.1 | 441.6 | 1,089.2 | 750.4 | 378.1 | 203.3 | 2,882.8 |
| ROOM OCCUPANCY RATES (per cent) | | | | | | | | | |
| <i>March quarter 1993</i> | 55.4 | 51.3 | 38.4 | 44.3 | 53.6 | 63.9 | 64.5 | 34.5 | 52.5 |
| <i>1994—</i> | | | | | | | | | |
| January | 56.2 | 54.6 | 39.2 | 46.4 | 57.2 | 65.5 | 62.9 | 37.5 | 55.2 |
| February | 68.7 | 50.2 | 38.8 | 39.8 | 52.8 | 74.4 | 83.3 | 39.3 | 56.2 |
| March | 66.6 | 53.9 | 40.7 | 44.1 | 57.2 | 74.0 | 75.2 | 40.9 | 58.1 |
| <i>March quarter 1994</i> | 63.7 | 53.0 | 39.6 | 43.5 | 55.8 | 71.2 | 73.5 | 39.2 | 56.5 |
| GUEST NIGHTS ('000) | | | | | | | | | |
| <i>March quarter 1993</i> | 1,411.7 | 3,448.0 | 39.5 | 954.2 | 1,943.9 | 1,040.5 | 584.4 | 297.3 | 4,859.7 |
| <i>1994—</i> | | | | | | | | | |
| January | 559.7 | 1,401.5 | 11.9 | 337.7 | 825.2 | 464.3 | 196.9 | 125.2 | 1,961.2 |
| February | 556.0 | 937.8 | 9.5 | 220.3 | 549.1 | 397.8 | 215.5 | 101.5 | 1,493.7 |
| March | 592.8 | 1,125.9 | 11.1 | 274.5 | 668.7 | 430.6 | 215.7 | 118.1 | 1,718.7 |
| <i>March quarter 1994</i> | 1,708.5 | 3,465.2 | 32.6 | 832.5 | 2,043.0 | 1,292.7 | 628.1 | 344.8 | 5,173.6 |
| BED OCCUPANCY RATES (per cent) | | | | | | | | | |
| <i>March quarter 1993</i> | 35.4 | 32.3 | 25.0 | 27.3 | 34.0 | 38.6 | 46.8 | 22.0 | 33.1 |
| <i>1994—</i> | | | | | | | | | |
| January | 38.8 | 38.5 | 27.0 | 31.1 | 40.5 | 45.0 | 50.7 | 25.2 | 38.6 |
| February | 42.6 | 28.6 | 23.8 | 22.4 | 29.9 | 42.7 | 61.5 | 22.7 | 32.6 |
| March | 41.1 | 30.9 | 25.2 | 25.2 | 32.9 | 41.7 | 55.6 | 23.9 | 33.8 |
| <i>March quarter 1994</i> | 40.8 | 32.8 | 25.4 | 26.4 | 34.6 | 43.2 | 55.7 | 24.0 | 35.1 |
| GUEST ARRIVALS ('000) | | | | | | | | | |
| <i>March quarter 1993</i> | 619.2 | 1,921.0 | 23.7 | 580.4 | 1,104.4 | 428.6 | 240.4 | 162.6 | 2,540.2 |
| <i>1994—</i> | | | | | | | | | |
| January | 254.4 | 757.8 | 6.7 | 204.5 | 457.2 | 200.0 | 79.3 | 64.5 | 1,012.2 |
| February | 268.6 | 527.8 | 5.2 | 136.4 | 321.3 | 189.5 | 91.9 | 52.1 | 796.4 |
| March | 286.7 | 647.7 | 6.6 | 169.3 | 391.8 | 213.2 | 89.7 | 63.8 | 934.5 |
| <i>March quarter 1994</i> | 809.7 | 1,933.3 | 18.6 | 510.2 | 1,170.3 | 602.6 | 261.0 | 180.4 | 2,743.0 |
| AVERAGE LENGTH OF STAY (days) | | | | | | | | | |
| <i>March quarter 1993</i> | 2.3 | 1.8 | 1.7 | 1.6 | 1.8 | 2.4 | 2.4 | 1.8 | 1.9 |
| <i>March quarter 1994</i> | 2.1 | 1.8 | 1.8 | 1.6 | 1.7 | 2.1 | 2.4 | 1.9 | 1.9 |
| TAKINGS FROM ACCOMMODATION (\$'000) | | | | | | | | | |
| <i>March quarter 1993</i> | 94,502 | 129,003 | 978 | 26,605 | 69,926 | 59,315 | 51,909 | 14,771 | 223,504 |
| <i>1994—</i> | | | | | | | | | |
| January | 34,071 | 48,553 | 313 | 8,943 | 27,962 | 24,521 | 15,938 | 4,947 | 82,624 |
| February | 41,089 | 38,088 | 268 | 6,257 | 21,888 | 25,162 | 20,625 | 4,978 | 79,177 |
| March | 43,086 | 45,188 | 303 | 7,710 | 26,138 | 28,000 | 20,491 | 5,632 | 88,273 |
| <i>March quarter 1994</i> | 118,245 | 131,829 | 883 | 22,910 | 75,988 | 77,683 | 57,053 | 15,557 | 250,074 |

(a) For footnote see end of table.

TABLE 5 — HOTELS, MOTELS AND GUEST HOUSES WITH FACILITIES BY STAR GRADING (a)—continued
VICTORIA

| Particulars | Licensed hotels with facilities | Motels and guest houses | Star grading | | | | | Ungraded | Total |
|---|---------------------------------|-------------------------|--------------|--------|--------|--------|--------|----------|---------|
| | | | 1 | 2 | 3 | 4 | 5 | | |
| ESTABLISHMENTS, CAPACITY AND EMPLOYMENT | | | | | | | | | |
| <i>March quarter 1993—</i> | | | | | | | | | |
| Establishments | 210 | 830 | 34 | 398 | 438 | 57 | 7 | 106 | 1,040 |
| Guest rooms | 9,619 | 20,325 | 337 | 7,535 | 11,910 | 5,560 | 2,413 | 2,189 | 29,944 |
| Bed spaces | 22,907 | 59,376 | 866 | 21,762 | 34,892 | 13,835 | 4,966 | 5,962 | 82,283 |
| Employment (persons) | 9,603 | 7,270 | 366 | 3,614 | 4,495 | 4,054 | 3,262 | 1,082 | 16,873 |
| <i>March quarter 1994—</i> | | | | | | | | | |
| Establishments | 196 | 821 | 23 | 385 | 453 | 66 | 8 | 82 | 1,017 |
| Guest rooms | 10,152 | 19,836 | 275 | 7,456 | 12,135 | 5,893 | 2,653 | 1,576 | 29,988 |
| Bed spaces | 24,772 | 57,909 | 720 | 21,208 | 35,966 | 14,769 | 5,524 | 4,494 | 82,681 |
| Employment (persons) | 9,908 | 6,585 | 278 | 3,382 | 4,498 | 4,114 | 3,262 | 959 | 16,493 |
| ROOM NIGHTS OCCUPIED ('000) | | | | | | | | | |
| <i>March quarter 1993</i> | 451.0 | 851.0 | 7.7 | 267.8 | 526.5 | 310.8 | 136.9 | 52.4 | 1,302.0 |
| <i>1994—</i> | | | | | | | | | |
| January | 162.7 | 283.7 | 1.6 | 91.4 | 185.0 | 102.1 | 52.3 | 14.0 | 446.4 |
| February | 171.3 | 250.2 | 1.4 | 72.2 | 166.5 | 114.8 | 53.0 | 13.6 | 421.5 |
| March | 201.3 | 303.5 | 2.0 | 89.0 | 202.1 | 131.8 | 62.3 | 17.6 | 504.8 |
| <i>March quarter 1994</i> | 535.2 | 837.5 | 4.9 | 252.6 | 553.7 | 348.7 | 167.5 | 45.3 | 1,372.7 |
| ROOM OCCUPANCY RATES (per cent) | | | | | | | | | |
| <i>March quarter 1993</i> | 52.1 | 46.6 | 25.4 | 39.5 | 49.2 | 62.1 | 63.0 | 26.6 | 48.3 |
| <i>1994—</i> | | | | | | | | | |
| January | 51.7 | 46.2 | 18.2 | 39.6 | 49.2 | 55.9 | 63.6 | 28.7 | 48.0 |
| February | 60.3 | 45.1 | 17.6 | 34.6 | 49.0 | 69.6 | 71.3 | 31.0 | 50.2 |
| March | 64.0 | 49.4 | 23.0 | 38.5 | 53.7 | 72.2 | 75.7 | 36.1 | 54.3 |
| <i>March quarter 1994</i> | 58.6 | 46.9 | 19.7 | 37.7 | 50.7 | 65.7 | 70.2 | 31.9 | 50.9 |
| GUEST NIGHTS ('000) | | | | | | | | | |
| <i>March quarter 1993</i> | 713.8 | 1,523.7 | 12.9 | 499.9 | 939.7 | 485.7 | 204.0 | 95.3 | 2,237.6 |
| <i>1994—</i> | | | | | | | | | |
| January | 276.8 | 568.4 | 2.5 | 185.2 | 370.2 | 180.8 | 80.2 | 26.3 | 845.3 |
| February | 254.4 | 423.0 | 1.9 | 127.0 | 278.9 | 169.3 | 76.5 | 23.8 | 677.4 |
| March | 302.4 | 518.1 | 2.8 | 157.6 | 342.0 | 201.6 | 88.0 | 28.6 | 820.5 |
| <i>March quarter 1994</i> | 833.7 | 1,509.5 | 7.1 | 469.8 | 991.1 | 551.7 | 244.7 | 78.7 | 2,343.2 |
| BED OCCUPANCY RATES (per cent) | | | | | | | | | |
| <i>March quarter 1993</i> | 34.6 | 28.5 | 16.6 | 25.5 | 29.9 | 39.0 | 45.6 | 17.8 | 30.2 |
| <i>1994—</i> | | | | | | | | | |
| January | 36.1 | 31.7 | 11.1 | 28.2 | 33.2 | 39.5 | 46.8 | 18.9 | 33.0 |
| February | 36.7 | 26.1 | 9.3 | 21.4 | 27.7 | 40.9 | 49.5 | 19.0 | 29.3 |
| March | 39.4 | 28.9 | 12.4 | 24.0 | 30.7 | 44.0 | 51.4 | 20.5 | 32.0 |
| <i>March quarter 1994</i> | 37.4 | 29.0 | 11.0 | 24.6 | 30.6 | 41.5 | 49.2 | 19.5 | 31.5 |
| GUEST ARRIVALS ('000) | | | | | | | | | |
| <i>March quarter 1993</i> | 317.5 | 871.4 | 8.3 | 299.8 | 539.7 | 212.6 | 88.0 | 40.6 | 1,188.9 |
| <i>1994—</i> | | | | | | | | | |
| January | 116.5 | 320.5 | 1.6 | 106.8 | 210.0 | 76.6 | 29.7 | 12.2 | 437.1 |
| February | 124.0 | 250.4 | 1.3 | 77.6 | 163.6 | 84.4 | 35.0 | 12.6 | 374.4 |
| March | 134.5 | 308.8 | 1.8 | 96.3 | 206.2 | 87.9 | 36.0 | 14.9 | 443.3 |
| <i>March quarter 1994</i> | 375.0 | 879.7 | 4.7 | 280.7 | 579.9 | 249.0 | 100.7 | 39.7 | 1,254.7 |
| AVERAGE LENGTH OF STAY (days) | | | | | | | | | |
| <i>March quarter 1993</i> | 2.2 | 1.7 | 1.6 | 1.7 | 1.7 | 2.3 | 2.3 | 2.3 | 1.9 |
| <i>March quarter 1994</i> | 2.2 | 1.7 | 1.5 | 1.7 | 1.7 | 2.2 | 2.4 | 2.0 | 1.9 |
| TAKINGS FROM ACCOMMODATION (\$'000) | | | | | | | | | |
| <i>March quarter 1993</i> | 50,070 | 57,563 | 329 | 13,793 | 35,678 | 33,774 | 20,535 | 3,525 | 107,633 |
| <i>1994—</i> | | | | | | | | | |
| January | 17,031 | 19,196 | 56 | 4,867 | 12,755 | 10,474 | 7,195 | 882 | 36,228 |
| February | 18,734 | 16,370 | 40 | 3,576 | 11,053 | 12,014 | 7,532 | 888 | 35,103 |
| March | 23,988 | 20,135 | 61 | 4,402 | 13,447 | 15,073 | 9,970 | 1,169 | 44,123 |
| <i>March quarter 1994</i> | 59,753 | 55,701 | 157 | 12,845 | 37,255 | 37,560 | 24,696 | 2,940 | 115,454 |

(a) For footnote see end of table.

TABLE 5 — HOTELS, MOTELS AND GUEST HOUSES WITH FACILITIES BY STAR GRADING (a)—continued
QUEENSLAND

| Particulars | Licensed hotels with facilities | Motels and guest houses | Star grading | | | | | Ungraded | Total |
|---|---------------------------------|-------------------------|--------------|---------------|----------------|---------------|---------------|---------------|----------------|
| | | | 1 | 2 | 3 | 4 | 5 | | |
| ESTABLISHMENTS, CAPACITY AND EMPLOYMENT | | | | | | | | | |
| <i>March quarter 1993—</i> | | | | | | | | | |
| Establishments | 281 | 840 | 31 | 461 | 381 | 47 | 17 | 184 | 1,121 |
| Guest rooms | 17,845 | 22,090 | 466 | 8,679 | 14,285 | 7,281 | 5,204 | 4,020 | 39,935 |
| Bed spaces | 52,691 | 68,641 | 1,306 | 26,122 | 43,374 | 23,183 | 15,012 | 12,335 | 121,332 |
| Employment (persons) | 19,163 | 8,051 | 242 | 3,852 | 6,847 | 5,143 | 7,983 | 3,147 | 27,214 |
| <i>March quarter 1994—</i> | | | | | | | | | |
| Establishments | 258 | 835 | 17 | 455 | 404 | 54 | 18 | 145 | 1,093 |
| Guest rooms | 17,914 | 22,148 | 277 | 8,547 | 15,328 | 7,829 | 5,533 | 2,548 | 40,062 |
| Bed spaces | 53,344 | 68,414 | 809 | 25,766 | 46,893 | 24,665 | 16,188 | 7,437 | 121,758 |
| Employment (persons) | 20,456 | 8,310 | 126 | 3,739 | 7,910 | 6,078 | 9,097 | 1,816 | 28,766 |
| ROOM NIGHTS OCCUPIED ('000) | | | | | | | | | |
| <i>March quarter 1993</i> | <i>944.1</i> | <i>1,069.2</i> | <i>14.5</i> | <i>356.6</i> | <i>721.5</i> | <i>426.7</i> | <i>319.7</i> | <i>174.2</i> | <i>2,013.3</i> |
| <i>1994—</i> | | | | | | | | | |
| January | 359.3 | 402.4 | 3.2 | 137.9 | 292.5 | 161.0 | 129.9 | 37.3 | 761.7 |
| February | 317.9 | 332.6 | 2.8 | 105.5 | 245.9 | 143.6 | 120.4 | 32.3 | 650.5 |
| March | 351.3 | 377.3 | 2.6 | 120.6 | 275.6 | 163.8 | 130.2 | 35.7 | 728.6 |
| <i>March quarter 1994</i> | <i>1,028.5</i> | <i>1,112.3</i> | <i>8.6</i> | <i>364.0</i> | <i>814.0</i> | <i>468.5</i> | <i>380.4</i> | <i>105.3</i> | <i>2,140.8</i> |
| ROOM OCCUPANCY RATES (per cent) | | | | | | | | | |
| <i>March quarter 1993</i> | <i>58.8</i> | <i>53.8</i> | <i>34.5</i> | <i>45.7</i> | <i>56.2</i> | <i>65.1</i> | <i>68.3</i> | <i>48.2</i> | <i>56.0</i> |
| <i>1994—</i> | | | | | | | | | |
| January | 64.7 | 58.6 | 36.8 | 52.0 | 61.6 | 66.4 | 75.7 | 47.2 | 61.3 |
| February | 63.4 | 53.8 | 35.5 | 44.4 | 57.4 | 65.5 | 77.7 | 45.3 | 58.1 |
| March | 63.3 | 55.1 | 30.9 | 45.8 | 58.0 | 67.5 | 75.9 | 45.4 | 58.8 |
| <i>March quarter 1994</i> | <i>63.8</i> | <i>55.9</i> | <i>34.3</i> | <i>47.5</i> | <i>59.0</i> | <i>66.5</i> | <i>76.4</i> | <i>46.0</i> | <i>59.4</i> |
| GUEST NIGHTS ('000) | | | | | | | | | |
| <i>March quarter 1993</i> | <i>1,727.8</i> | <i>2,032.8</i> | <i>24.5</i> | <i>666.3</i> | <i>1,354.6</i> | <i>801.9</i> | <i>564.3</i> | <i>349.0</i> | <i>3,760.6</i> |
| <i>1994—</i> | | | | | | | | | |
| January | 735.8 | 873.7 | 5.9 | 282.2 | 632.9 | 363.2 | 246.0 | 79.3 | 1,609.5 |
| February | 570.4 | 585.0 | 4.5 | 181.1 | 436.4 | 262.2 | 211.3 | 60.0 | 1,155.5 |
| March | 637.7 | 664.4 | 4.0 | 207.4 | 489.8 | 308.2 | 227.3 | 65.3 | 1,302.1 |
| <i>March quarter 1994</i> | <i>1,943.9</i> | <i>2,123.1</i> | <i>14.5</i> | <i>670.7</i> | <i>1,559.1</i> | <i>933.6</i> | <i>684.5</i> | <i>204.6</i> | <i>4,067.0</i> |
| BED OCCUPANCY RATES (per cent) | | | | | | | | | |
| <i>March quarter 1993</i> | <i>36.4</i> | <i>32.9</i> | <i>20.9</i> | <i>28.3</i> | <i>34.7</i> | <i>38.4</i> | <i>41.5</i> | <i>31.5</i> | <i>34.4</i> |
| <i>1994—</i> | | | | | | | | | |
| January | 44.5 | 41.2 | 23.6 | 35.3 | 43.5 | 47.5 | 49.0 | 34.4 | 42.6 |
| February | 38.2 | 30.6 | 20.0 | 25.2 | 33.3 | 38.0 | 46.6 | 28.8 | 34.0 |
| March | 38.6 | 31.4 | 16.1 | 26.1 | 33.7 | 40.4 | 45.3 | 28.4 | 34.6 |
| <i>March quarter 1994</i> | <i>40.5</i> | <i>34.5</i> | <i>19.9</i> | <i>29.0</i> | <i>36.9</i> | <i>42.1</i> | <i>47.0</i> | <i>30.6</i> | <i>37.2</i> |
| GUEST ARRIVALS ('000) | | | | | | | | | |
| <i>March quarter 1993</i> | <i>577.5</i> | <i>929.0</i> | <i>13.7</i> | <i>342.7</i> | <i>592.1</i> | <i>271.1</i> | <i>175.6</i> | <i>111.4</i> | <i>1,506.5</i> |
| <i>1994—</i> | | | | | | | | | |
| January | 239.0 | 389.2 | 2.8 | 152.4 | 255.7 | 124.0 | 69.7 | 23.6 | 628.2 |
| February | 211.4 | 281.9 | 2.1 | 102.8 | 192.5 | 104.6 | 72.3 | 19.2 | 493.4 |
| March | 236.2 | 319.3 | 2.0 | 116.3 | 212.9 | 125.5 | 76.6 | 22.1 | 555.5 |
| <i>March quarter 1994</i> | <i>686.6</i> | <i>990.5</i> | <i>6.9</i> | <i>371.5</i> | <i>661.1</i> | <i>354.2</i> | <i>218.6</i> | <i>64.8</i> | <i>1,677.1</i> |
| AVERAGE LENGTH OF STAY (days) | | | | | | | | | |
| <i>March quarter 1993</i> | <i>3.0</i> | <i>2.2</i> | <i>1.8</i> | <i>1.9</i> | <i>2.3</i> | <i>3.0</i> | <i>3.2</i> | <i>3.1</i> | <i>2.5</i> |
| <i>March quarter 1994</i> | <i>2.8</i> | <i>2.1</i> | <i>2.1</i> | <i>1.8</i> | <i>2.4</i> | <i>2.6</i> | <i>3.1</i> | <i>3.2</i> | <i>2.4</i> |
| TAKINGS FROM ACCOMMODATION (\$'000) | | | | | | | | | |
| <i>March quarter 1993</i> | <i>102,137</i> | <i>64,910</i> | <i>615</i> | <i>15,886</i> | <i>49,197</i> | <i>42,011</i> | <i>46,077</i> | <i>13,261</i> | <i>167,047</i> |
| <i>1994—</i> | | | | | | | | | |
| January | 43,025 | 26,833 | 204 | 6,903 | 22,478 | 16,961 | 20,777 | 2,536 | 69,858 |
| February | 35,531 | 20,628 | 170 | 4,573 | 17,331 | 14,245 | 17,935 | 1,903 | 56,159 |
| March | 40,891 | 23,697 | 140 | 5,257 | 19,954 | 16,492 | 20,580 | 2,165 | 64,588 |
| <i>March quarter 1994</i> | <i>119,446</i> | <i>71,158</i> | <i>514</i> | <i>16,734</i> | <i>59,763</i> | <i>47,698</i> | <i>59,291</i> | <i>6,604</i> | <i>190,605</i> |

(a) For footnote see end of table.

TABLE 5 — HOTELS, MOTELS AND GUEST HOUSES WITH FACILITIES BY STAR GRADING (a)—continued
SOUTH AUSTRALIA

| Particulars | Licensed hotels with facilities | Motels and guest houses | Star grading | | | | | Ungraded | Total |
|--|---------------------------------|-------------------------|--------------|-------|--------|-------|-------|----------|--------|
| | | | 1 | 2 | 3 | 4 | 5 | | |
| ESTABLISHMENTS, CAPACITY AND EMPLOYMENT | | | | | | | | | |
| <i>March quarter 1993—</i> | | | | | | | | | |
| Establishments | 121 | 242 | 17 | 155 | 137 | 16 | 3 | 35 | 363 |
| Guest rooms | 4,538 | 6,201 | 227 | 3,295 | 4,732 | 1,067 | 1,083 | 335 | 10,739 |
| Bed spaces | 11,038 | 19,055 | 456 | 9,291 | 13,975 | 3,336 | 2,164 | 871 | 30,093 |
| Employment (persons) | 5,175 | 2,419 | 290 | 2,169 | 2,576 | 943 | 1,015 | 601 | 7,594 |
| <i>March quarter 1994—</i> | | | | | | | | | |
| Establishments | 113 | 229 | 11 | 149 | 137 | 17 | 3 | 25 | 342 |
| Guest rooms | 4,453 | 6,172 | 142 | 3,318 | 4,669 | 1,119 | 1,081 | 296 | 10,625 |
| Bed spaces | 10,913 | 18,963 | 302 | 9,363 | 13,820 | 3,444 | 2,162 | 785 | 29,876 |
| Employment (persons) | 4,928 | 2,400 | 199 | 2,045 | 2,546 | 1,012 | 952 | 574 | 7,328 |
| ROOM NIGHTS OCCUPIED ('000) | | | | | | | | | |
| <i>March quarter 1993</i> | 184.2 | 269.0 | 3.3 | 106.3 | 216.5 | 64.8 | 52.4 | 9.9 | 453.2 |
| <i>1994—</i> | | | | | | | | | |
| January | 60.1 | 99.1 | 0.8 | 40.7 | 76.0 | 22.2 | 16.4 | 3.1 | 159.2 |
| February | 64.7 | 79.4 | 0.8 | 32.1 | 64.3 | 23.5 | 20.5 | 3.0 | 144.1 |
| March | 76.2 | 98.2 | 1.2 | 37.9 | 80.5 | 25.4 | 26.2 | 3.1 | 174.5 |
| <i>March quarter 1994</i> | 201.1 | 276.7 | 2.8 | 110.7 | 220.8 | 71.1 | 63.1 | 9.2 | 477.8 |
| ROOM OCCUPANCY RATES (per cent) | | | | | | | | | |
| <i>March quarter 1993</i> | 45.1 | 48.3 | 16.0 | 36.0 | 50.8 | 67.5 | 53.8 | 32.8 | 47.0 |
| <i>1994—</i> | | | | | | | | | |
| January | 43.5 | 51.8 | 18.5 | 39.5 | 52.5 | 64.0 | 49.0 | 34.0 | 48.3 |
| February | 52.1 | 45.9 | 19.3 | 34.6 | 49.2 | 74.9 | 67.7 | 36.1 | 48.5 |
| March | 55.4 | 51.3 | 28.2 | 37.0 | 55.6 | 73.3 | 78.2 | 34.1 | 53.0 |
| <i>March quarter 1994</i> | 50.3 | 49.8 | 22.1 | 37.2 | 52.6 | 70.6 | 64.9 | 34.7 | 50.0 |
| GUEST NIGHTS ('000) | | | | | | | | | |
| <i>March quarter 1993</i> | 286.9 | 491.7 | 4.8 | 194.4 | 382.0 | 109.9 | 72.1 | 15.4 | 778.6 |
| <i>1994—</i> | | | | | | | | | |
| January | 104.6 | 205.2 | 1.2 | 81.6 | 154.2 | 43.4 | 24.8 | 4.6 | 309.8 |
| February | 94.2 | 132.2 | 1.0 | 53.9 | 103.3 | 35.7 | 28.5 | 4.0 | 226.4 |
| March | 110.8 | 166.2 | 1.7 | 63.7 | 131.7 | 39.4 | 36.3 | 4.2 | 277.0 |
| <i>March quarter 1994</i> | 309.6 | 503.5 | 3.9 | 199.3 | 389.1 | 118.5 | 89.6 | 12.8 | 813.1 |
| BED OCCUPANCY RATES (per cent) | | | | | | | | | |
| <i>March quarter 1993</i> | 28.9 | 28.7 | 11.7 | 23.4 | 30.4 | 36.6 | 37.0 | 19.7 | 28.8 |
| <i>1994—</i> | | | | | | | | | |
| January | 30.9 | 34.9 | 12.7 | 28.1 | 36.0 | 40.7 | 37.0 | 18.8 | 33.4 |
| February | 30.9 | 24.9 | 12.1 | 20.6 | 26.7 | 37.0 | 47.2 | 18.3 | 27.1 |
| March | 32.9 | 28.3 | 18.5 | 22.0 | 30.7 | 36.9 | 54.2 | 17.3 | 29.9 |
| <i>March quarter 1994</i> | 31.6 | 29.5 | 14.5 | 23.7 | 31.3 | 38.2 | 46.1 | 18.1 | 30.3 |
| GUEST ARRIVALS ('000) | | | | | | | | | |
| <i>March quarter 1993</i> | 139.3 | 259.7 | 2.7 | 108.4 | 203.0 | 41.2 | 36.1 | 7.5 | 399.0 |
| <i>1994—</i> | | | | | | | | | |
| January | 54.9 | 108.5 | 0.7 | 47.4 | 79.8 | 22.0 | 11.5 | 2.0 | 163.4 |
| February | 49.2 | 75.5 | 0.6 | 31.8 | 56.9 | 19.5 | 14.2 | 1.8 | 124.7 |
| March | 56.2 | 93.1 | 1.0 | 38.3 | 72.0 | 21.0 | 15.2 | 1.9 | 149.3 |
| <i>March quarter 1994</i> | 160.3 | 277.1 | 2.3 | 117.5 | 208.7 | 62.4 | 40.9 | 5.7 | 437.4 |
| AVERAGE LENGTH OF STAY (days) | | | | | | | | | |
| <i>March quarter 1993</i> | 2.1 | 1.9 | 1.8 | 1.8 | 1.9 | 2.7 | 2.0 | 2.1 | 2.0 |
| <i>March quarter 1994</i> | 1.9 | 1.8 | 1.7 | 1.7 | 1.9 | 1.9 | 2.2 | 2.3 | 1.9 |
| TAKINGS FROM ACCOMMODATION (\$'000) | | | | | | | | | |
| <i>March quarter 1993</i> | 15,237 | 16,973 | 93 | 4,759 | 14,292 | 6,381 | 6,198 | 487 | 32,210 |
| <i>1994—</i> | | | | | | | | | |
| January | 4,826 | 6,315 | 25 | 1,886 | 5,055 | 2,198 | 1,830 | 147 | 11,141 |
| February | 5,690 | 5,057 | 24 | 1,400 | 4,259 | 2,423 | 2,501 | 139 | 10,747 |
| March | 6,812 | 6,307 | 36 | 1,707 | 5,375 | 2,537 | 3,322 | 141 | 13,119 |
| <i>March quarter 1994</i> | 17,328 | 17,679 | 85 | 4,993 | 14,689 | 7,158 | 7,654 | 427 | 35,007 |

(a) For footnote see end of table.

TABLE 5 — HOTELS, MOTELS AND GUEST HOUSES WITH FACILITIES BY STAR GRADING (a)—continued
WESTERN AUSTRALIA

| Particulars | Licensed hotels with facilities | Motels and guest houses | Star grading | | | | | Ungraded | Total |
|---|---------------------------------|-------------------------|--------------|-------|--------|-------|--------|----------|---------|
| | | | 1 | 2 | 3 | 4 | 5 | | |
| ESTABLISHMENTS, CAPACITY AND EMPLOYMENT | | | | | | | | | |
| <i>March quarter 1993—</i> | | | | | | | | | |
| Establishments | 159 | 161 | 9 | 118 | 113 | 9 | 8 | 63 | 320 |
| Guest rooms | 8,021 | 6,454 | 153 | 3,404 | 5,972 | 961 | 2,245 | 1,740 | 14,475 |
| Bed spaces | 19,352 | 17,940 | 332 | 8,668 | 16,212 | 2,602 | 5,332 | 4,146 | 37,292 |
| Employment (persons) | 6,891 | 2,354 | 123 | 1,646 | 2,806 | 1,177 | 2,499 | 994 | 9,245 |
| <i>March quarter 1994—</i> | | | | | | | | | |
| Establishments | 162 | 168 | 10 | 125 | 112 | 9 | 9 | 65 | 330 |
| Guest rooms | 8,189 | 6,531 | 166 | 3,608 | 6,069 | 877 | 2,424 | 1,576 | 14,720 |
| Bed spaces | 19,893 | 18,312 | 369 | 9,135 | 16,665 | 2,296 | 6,031 | 3,709 | 38,205 |
| Employment (persons) | 7,044 | 2,550 | 144 | 1,742 | 3,036 | 1,191 | 2,495 | 986 | 9,594 |
| ROOM NIGHTS OCCUPIED ('000) | | | | | | | | | |
| <i>March quarter 1993</i> | 382.4 | 305.6 | 3.4 | 130.2 | 293.8 | 64.5 | 140.7 | 55.2 | 688.0 |
| <i>1994—</i> | | | | | | | | | |
| January | 134.2 | 117.0 | 1.8 | 52.7 | 108.9 | 20.1 | 50.2 | 17.5 | 251.2 |
| February | 134.3 | 98.7 | 1.4 | 44.3 | 95.7 | 20.5 | 54.6 | 16.6 | 233.0 |
| March | 154.4 | 115.1 | 1.6 | 52.9 | 111.7 | 22.4 | 60.6 | 20.4 | 269.5 |
| <i>March quarter 1994</i> | 422.9 | 330.8 | 4.8 | 149.9 | 316.2 | 63.0 | 165.4 | 54.4 | 753.7 |
| ROOM OCCUPANCY RATES (per cent) | | | | | | | | | |
| <i>March quarter 1993</i> | 53.0 | 52.6 | 25.0 | 42.5 | 54.7 | 74.6 | 69.7 | 35.3 | 52.8 |
| <i>1994—</i> | | | | | | | | | |
| January | 53.1 | 57.9 | 34.8 | 47.1 | 58.0 | 73.8 | 66.8 | 36.6 | 55.2 |
| February | 58.7 | 54.0 | 29.2 | 43.9 | 56.3 | 83.6 | 80.4 | 38.0 | 56.6 |
| March | 60.8 | 56.9 | 31.5 | 47.3 | 59.4 | 82.3 | 80.7 | 41.7 | 59.1 |
| <i>March quarter 1994</i> | 57.5 | 56.3 | 31.9 | 46.2 | 57.9 | 79.8 | 75.8 | 38.8 | 57.0 |
| GUEST NIGHTS ('000) | | | | | | | | | |
| <i>March quarter 1993</i> | 606.5 | 571.9 | 5.7 | 225.4 | 530.4 | 115.0 | 209.7 | 92.3 | 1,178.4 |
| <i>1994—</i> | | | | | | | | | |
| January | 225.9 | 244.0 | 3.1 | 99.6 | 217.1 | 33.8 | 87.7 | 28.6 | 469.9 |
| February | 201.1 | 172.5 | 2.1 | 69.4 | 162.3 | 30.6 | 84.6 | 24.6 | 373.6 |
| March | 237.5 | 207.0 | 2.4 | 86.3 | 194.1 | 34.6 | 95.4 | 31.6 | 444.5 |
| <i>March quarter 1994</i> | 664.5 | 623.5 | 7.6 | 255.3 | 573.5 | 99.1 | 267.7 | 84.8 | 1,288.0 |
| BED OCCUPANCY RATES (per cent) | | | | | | | | | |
| <i>March quarter 1993</i> | 34.9 | 35.4 | 19.1 | 28.9 | 36.4 | 49.1 | 43.7 | 24.7 | 35.1 |
| <i>1994—</i> | | | | | | | | | |
| January | 36.8 | 43.1 | 27.1 | 35.2 | 42.1 | 47.5 | 46.9 | 25.5 | 39.8 |
| February | 36.2 | 33.7 | 20.5 | 27.1 | 34.8 | 47.6 | 50.1 | 24.0 | 35.0 |
| March | 38.5 | 36.5 | 21.1 | 30.5 | 37.6 | 48.7 | 51.0 | 27.5 | 37.5 |
| <i>March quarter 1994</i> | 37.2 | 37.9 | 23.0 | 31.0 | 38.3 | 47.9 | 49.3 | 25.7 | 37.5 |
| GUEST ARRIVALS ('000) | | | | | | | | | |
| <i>March quarter 1993</i> | 252.5 | 228.0 | 2.8 | 110.4 | 199.0 | 49.1 | 87.3 | 31.9 | 480.5 |
| <i>1994—</i> | | | | | | | | | |
| January | 86.9 | 95.9 | 1.5 | 47.3 | 80.4 | 10.1 | 32.2 | 11.1 | 182.7 |
| February | 80.9 | 71.5 | 1.0 | 33.3 | 63.7 | 10.5 | 33.9 | 9.9 | 152.3 |
| March | 96.0 | 85.8 | 1.3 | 42.0 | 74.9 | 11.8 | 39.2 | 12.6 | 181.8 |
| <i>March quarter 1994</i> | 263.8 | 253.1 | 3.9 | 122.6 | 219.1 | 32.4 | 105.3 | 33.6 | 516.8 |
| AVERAGE LENGTH OF STAY (days) | | | | | | | | | |
| <i>March quarter 1993</i> | 2.4 | 2.5 | 2.0 | 2.0 | 2.7 | 2.3 | 2.4 | 2.9 | 2.5 |
| <i>March quarter 1994</i> | 2.5 | 2.5 | 2.0 | 2.1 | 2.6 | 3.1 | 2.5 | 2.5 | 2.5 |
| TAKINGS FROM ACCOMMODATION (\$'000) | | | | | | | | | |
| <i>March quarter 1993</i> | 31,183 | 18,677 | 124 | 6,417 | 18,350 | 6,212 | 16,032 | 2,726 | 49,860 |
| <i>1994—</i> | | | | | | | | | |
| January | 11,368 | 7,741 | 65 | 2,724 | 7,565 | 2,005 | 5,891 | 859 | 19,109 |
| February | 11,543 | 6,061 | 43 | 2,151 | 6,203 | 2,053 | 6,443 | 711 | 17,603 |
| March | 13,090 | 7,175 | 55 | 2,615 | 7,338 | 2,305 | 7,073 | 879 | 20,265 |
| <i>March quarter 1994</i> | 36,001 | 20,976 | 163 | 7,490 | 21,106 | 6,362 | 19,407 | 2,449 | 56,977 |

(a) For footnote see end of table.

TABLE 5 — HOTELS, MOTELS AND GUEST HOUSES WITH FACILITIES BY STAR GRADING (a)—continued
TASMANIA

| Particulars | Licensed hotels with facilities | Motels and guest houses | Star grading | | | Total |
|--|---------------------------------|-------------------------|-------------------|-------|---------|--------|
| | | | 1, 2 and Ungraded | 3 | 4 and 5 | |
| ESTABLISHMENTS, CAPACITY AND EMPLOYMENT | | | | | | |
| <i>March quarter 1993—</i> | | | | | | |
| Establishments | 90 | 90 | 97 | 67 | 16 | 180 |
| Guest rooms | 3,423 | 1,760 | 1,311 | 2,313 | 1,559 | 5,183 |
| Bed spaces | 9,812 | 5,484 | 3,528 | 7,111 | 4,657 | 15,296 |
| Employment (persons) | 3,591 | 694 | 998 | 1,306 | 1,981 | 4,285 |
| <i>March quarter 1994—</i> | | | | | | |
| Establishments | 92 | 86 | 77 | 79 | 22 | 178 |
| Guest rooms | 3,489 | 1,845 | 1,421 | 2,464 | 1,449 | 5,334 |
| Bed spaces | 9,993 | 5,665 | 4,069 | 7,449 | 4,140 | 15,658 |
| Employment (persons) | 3,587 | 754 | 1,059 | 1,351 | 1,931 | 4,341 |
| ROOM NIGHTS OCCUPIED ('000) | | | | | | |
| <i>March quarter 1993</i> | 200.6 | 105.4 | 63.4 | 136.1 | 106.5 | 306.0 |
| <i>1994—</i> | | | | | | |
| January | 64.8 | 35.7 | 24.8 | 45.0 | 30.7 | 100.6 |
| February | 63.9 | 34.2 | 22.2 | 44.3 | 31.7 | 98.1 |
| March | 77.1 | 42.2 | 25.6 | 54.8 | 38.9 | 119.3 |
| <i>March quarter 1994</i> | 205.9 | 112.1 | 72.6 | 144.1 | 101.3 | 318.0 |
| ROOM OCCUPANCY RATES (per cent) | | | | | | |
| <i>March quarter 1993</i> | 65.2 | 66.5 | 53.8 | 65.4 | 75.9 | 65.6 |
| <i>1994—</i> | | | | | | |
| January | 59.9 | 62.5 | 56.3 | 59.0 | 68.4 | 60.8 |
| February | 65.5 | 66.2 | 55.8 | 64.2 | 78.1 | 65.7 |
| March | 71.3 | 73.7 | 58.2 | 71.7 | 86.6 | 72.2 |
| <i>March quarter 1994</i> | 65.6 | 67.5 | 56.8 | 65.0 | 77.7 | 66.2 |
| GUEST NIGHTS ('000) | | | | | | |
| <i>March quarter 1993</i> | 361.4 | 203.1 | 113.2 | 264.0 | 187.2 | 564.4 |
| <i>1994—</i> | | | | | | |
| January | 125.0 | 75.1 | 50.8 | 94.4 | 54.9 | 200.1 |
| February | 112.0 | 64.9 | 41.3 | 84.6 | 51.0 | 176.8 |
| March | 133.8 | 79.2 | 47.5 | 102.5 | 63.0 | 213.0 |
| <i>March quarter 1994</i> | 370.7 | 219.2 | 139.5 | 281.6 | 168.8 | 589.9 |
| BED OCCUPANCY RATES (per cent) | | | | | | |
| <i>March quarter 1993</i> | 41.0 | 41.1 | 35.7 | 41.3 | 44.7 | 41.0 |
| <i>1994—</i> | | | | | | |
| January | 40.3 | 42.8 | 40.3 | 40.9 | 42.7 | 41.2 |
| February | 40.0 | 40.9 | 36.2 | 40.5 | 44.0 | 40.3 |
| March | 43.2 | 45.1 | 37.6 | 44.4 | 49.1 | 43.9 |
| <i>March quarter 1994</i> | 41.2 | 43.0 | 38.1 | 42.0 | 45.3 | 41.9 |
| GUEST ARRIVALS ('000) | | | | | | |
| <i>March quarter 1993</i> | 183.3 | 112.3 | 70.5 | 157.1 | 68.0 | 295.6 |
| <i>1994—</i> | | | | | | |
| January | 65.9 | 41.8 | 32.8 | 51.6 | 23.3 | 107.7 |
| February | 62.1 | 36.3 | 27.5 | 47.3 | 23.5 | 98.4 |
| March | 73.7 | 43.8 | 31.3 | 57.0 | 29.2 | 117.5 |
| <i>March quarter 1994</i> | 201.6 | 121.9 | 91.6 | 155.9 | 76.0 | 323.5 |
| AVERAGE LENGTH OF STAY (days) | | | | | | |
| <i>March quarter 1993</i> | 2.0 | 1.8 | 1.6 | 1.7 | 2.8 | 1.9 |
| <i>March quarter 1994</i> | 1.8 | 1.8 | 1.5 | 1.8 | 2.2 | 1.8 |
| TAKINGS FROM ACCOMMODATION (\$'000) | | | | | | |
| <i>March quarter 1993</i> | 15,535 | 6,532 | 3,215 | 8,851 | 10,002 | 22,068 |
| <i>1994—</i> | | | | | | |
| January | 5,029 | 2,264 | 1,454 | 2,914 | 2,925 | 7,294 |
| February | 4,844 | 2,157 | 1,245 | 2,768 | 2,988 | 7,001 |
| March | 5,896 | 2,622 | 1,403 | 3,462 | 3,653 | 8,518 |
| <i>March quarter 1994</i> | 15,769 | 7,044 | 4,102 | 9,144 | 9,567 | 22,812 |

(a) For footnote see end of table.

TABLE 5 — HOTELS, MOTELS AND GUEST HOUSES WITH FACILITIES BY STAR GRADING (a)—continued
NORTHERN TERRITORY

| Particulars | Licensed hotels with facilities | Motels and guest houses | Star grading | | | | | Ungraded | Total |
|---|---------------------------------|-------------------------|--------------|-------|-------|---------|-------|----------|-------|
| | | | 1 | 2 | 3 | 4 and 5 | | | |
| ESTABLISHMENTS, CAPACITY AND EMPLOYMENT | | | | | | | | | |
| <i>March quarter 1993—</i> | | | | | | | | | |
| Establishments | 30 | 60 | 10 | 30 | 26 | 6 | 18 | 90 | |
| Guest rooms | 2,004 | 3,127 | 236 | 1,203 | 2,087 | 1,097 | 508 | 5,131 | |
| Bed spaces | 5,711 | 9,287 | 652 | 3,567 | 6,212 | 3,151 | 1,416 | 14,998 | |
| Employment (persons) | 1,663 | 960 | 94 | 456 | 855 | 1,049 | 169 | 2,623 | |
| <i>March quarter 1994—</i> | | | | | | | | | |
| Establishments | 29 | 64 | 14 | 39 | 20 | 5 | 15 | 93 | |
| Guest rooms | 1,992 | 3,287 | 339 | 1,846 | 1,808 | 987 | 299 | 5,279 | |
| Bed spaces | 5,621 | 9,478 | 997 | 5,215 | 5,320 | 2,716 | 851 | 15,099 | |
| Employment (persons) | 1,786 | 1,014 | 119 | 692 | 824 | 1,022 | 143 | 2,800 | |
| ROOM NIGHTS OCCUPIED ('000) | | | | | | | | | |
| <i>March quarter 1993</i> | 81.4 | 94.1 | 4.3 | 34.0 | 83.5 | 44.0 | 9.8 | 175.5 | |
| <i>1994—</i> | | | | | | | | | |
| January | 24.6 | 35.1 | 3.3 | 17.6 | 24.4 | 11.6 | 2.8 | 59.6 | |
| February | 25.1 | 37.0 | 3.0 | 17.8 | 27.3 | 10.9 | 3.1 | 62.1 | |
| March | 34.7 | 48.2 | 3.0 | 24.3 | 35.2 | 17.0 | 3.5 | 82.9 | |
| <i>March quarter 1994</i> | 84.4 | 120.3 | 9.3 | 59.7 | 86.9 | 39.4 | 9.4 | 204.6 | |
| ROOM OCCUPANCY RATES (per cent) | | | | | | | | | |
| March quarter 1993 | 45.2 | 34.1 | 20.2 | 31.4 | 45.9 | 44.5 | 21.4 | 38.5 | |
| <i>1994—</i> | | | | | | | | | |
| January | 39.8 | 34.4 | 31.1 | 30.7 | 43.6 | 37.9 | 29.8 | 36.4 | |
| February | 45.0 | 40.2 | 31.7 | 34.4 | 53.9 | 39.3 | 37.4 | 42.0 | |
| March | 56.2 | 47.3 | 28.3 | 42.4 | 62.7 | 55.4 | 38.1 | 50.7 | |
| March quarter 1994 | 47.1 | 40.7 | 30.3 | 35.9 | 53.4 | 44.4 | 35.0 | 43.1 | |
| GUEST NIGHTS ('000) | | | | | | | | | |
| <i>March quarter 1993</i> | 135.2 | 163.8 | 8.7 | 61.9 | 142.3 | 70.9 | 15.2 | 299.0 | |
| <i>1994—</i> | | | | | | | | | |
| January | 43.4 | 61.9 | 6.2 | 31.2 | 43.4 | 20.3 | 4.1 | 105.3 | |
| February | 41.9 | 59.3 | 5.1 | 27.9 | 45.6 | 17.7 | 4.8 | 101.2 | |
| March | 56.9 | 78.8 | 4.9 | 38.6 | 60.5 | 26.4 | 5.2 | 135.7 | |
| <i>March quarter 1994</i> | 142.2 | 200.0 | 16.3 | 97.7 | 149.6 | 64.4 | 14.1 | 342.2 | |
| BED OCCUPANCY RATES (per cent) | | | | | | | | | |
| March quarter 1993 | 26.3 | 20.0 | 14.8 | 19.3 | 26.3 | 25.0 | 12.0 | 22.5 | |
| <i>1994—</i> | | | | | | | | | |
| January | 24.9 | 21.1 | 20.2 | 19.3 | 26.3 | 24.1 | 15.6 | 22.5 | |
| February | 26.6 | 22.3 | 18.4 | 19.1 | 30.6 | 23.3 | 20.1 | 23.9 | |
| March | 32.7 | 26.8 | 16.0 | 23.9 | 36.7 | 31.3 | 19.8 | 29.0 | |
| March quarter 1994 | 28.1 | 23.4 | 18.2 | 20.8 | 31.2 | 26.4 | 18.5 | 25.2 | |
| GUEST ARRIVALS ('000) | | | | | | | | | |
| <i>March quarter 1993</i> | 67.0 | 74.7 | 5.5 | 25.9 | 62.4 | 37.8 | 10.2 | 141.8 | |
| <i>1994—</i> | | | | | | | | | |
| January | 24.3 | 32.2 | 3.3 | 16.9 | 19.8 | 13.6 | 2.8 | 56.4 | |
| February | 25.4 | 31.5 | 2.1 | 14.9 | 24.4 | 12.3 | 3.2 | 56.9 | |
| March | 32.9 | 40.5 | 2.2 | 20.1 | 28.9 | 18.8 | 3.3 | 73.3 | |
| <i>March quarter 1994</i> | 82.5 | 104.1 | 7.6 | 51.9 | 73.1 | 44.7 | 9.3 | 186.6 | |
| AVERAGE LENGTH OF STAY (days) | | | | | | | | | |
| March quarter 1993 | 2.0 | 2.2 | 1.6 | 2.4 | 2.3 | 1.9 | 1.5 | 2.1 | |
| March quarter 1994 | 1.7 | 1.9 | 2.1 | 1.9 | 2.0 | 1.4 | 1.5 | 1.8 | |
| TAKINGS FROM ACCOMMODATION (\$'000) | | | | | | | | | |
| <i>March quarter 1993</i> | 7,822 | 5,621 | 180 | 1,721 | 5,968 | 5,010 | 565 | 13,443 | |
| <i>1994—</i> | | | | | | | | | |
| January | 2,431 | 2,058 | 125 | 908 | 1,926 | 1,407 | 123 | 4,489 | |
| February | 2,339 | 2,295 | 117 | 924 | 2,200 | 1,237 | 157 | 4,635 | |
| March | 3,401 | 2,986 | 124 | 1,282 | 2,795 | 2,008 | 178 | 6,387 | |
| <i>March quarter 1994</i> | 8,171 | 7,340 | 366 | 3,115 | 6,921 | 4,652 | 457 | 15,510 | |

(a) For footnote see end of table.

TABLE 5 — HOTELS, MOTELS AND GUEST HOUSES WITH FACILITIES BY STAR GRADING (a)—continued
AUSTRALIAN CAPITAL TERRITORY

| Particulars | Licensed hotels with facilities | Motels and guest houses | Star grading | | | Total |
|---|---------------------------------|-------------------------|-------------------|-------|---------|--------|
| | | | 1, 2 and Ungraded | 3 | 4 and 5 | |
| ESTABLISHMENTS, CAPACITY AND EMPLOYMENT | | | | | | |
| <i>March quarter 1993—</i> | | | | | | |
| Establishments | 13 | 31 | 17 | 20 | 7 | 44 |
| Guest rooms | 1,648 | 1,903 | 949 | 1,432 | 1,170 | 3,551 |
| Bed spaces | 4,162 | 6,011 | 2,818 | 4,315 | 3,040 | 10,173 |
| Employment (persons) | 1,473 | 648 | 357 | 580 | 1,184 | 2,121 |
| <i>March quarter 1994—</i> | | | | | | |
| Establishments | 13 | 29 | 12 | 23 | 7 | 42 |
| Guest rooms | 1,666 | 1,819 | 612 | 1,704 | 1,169 | 3,485 |
| Bed spaces | 4,390 | 5,819 | 1,857 | 5,189 | 3,163 | 10,209 |
| Employment (persons) | 1,490 | 593 | 221 | 677 | 1,185 | 2,083 |
| ROOM NIGHTS OCCUPIED ('000) | | | | | | |
| <i>March quarter 1993</i> | 104.7 | 96.9 | 47.1 | 73.8 | 80.6 | 201.5 |
| <i>1994—</i> | | | | | | |
| January | 29.7 | 30.5 | 8.7 | 27.6 | 23.8 | 60.2 |
| February | 37.5 | 30.8 | 9.5 | 30.1 | 28.6 | 68.3 |
| March | 41.3 | 34.7 | 11.3 | 33.7 | 31.0 | 76.0 |
| <i>March quarter 1994</i> | 108.5 | 96.0 | 29.6 | 91.4 | 83.5 | 204.5 |
| ROOM OCCUPANCY RATES (per cent) | | | | | | |
| <i>March quarter 1993</i> | 70.6 | 56.5 | 55.2 | 57.2 | 76.6 | 63.1 |
| <i>1994—</i> | | | | | | |
| January | 57.5 | 54.1 | 46.1 | 52.2 | 65.8 | 55.7 |
| February | 80.5 | 60.4 | 55.7 | 63.2 | 87.4 | 70.0 |
| March | 79.9 | 61.6 | 59.5 | 63.8 | 85.6 | 70.4 |
| <i>March quarter 1994</i> | 72.4 | 58.6 | 53.7 | 59.6 | 79.3 | 65.2 |
| GUEST NIGHTS ('000) | | | | | | |
| <i>March quarter 1993</i> | 171.7 | 180.9 | 85.8 | 134.2 | 132.7 | 352.7 |
| <i>1994—</i> | | | | | | |
| January | 53.7 | 63.4 | 17.6 | 56.9 | 42.5 | 117.1 |
| February | 57.1 | 49.8 | 14.9 | 50.6 | 41.5 | 106.9 |
| March | 62.1 | 58.2 | 18.6 | 57.1 | 44.5 | 120.2 |
| <i>March quarter 1994</i> | 172.9 | 171.4 | 51.1 | 164.6 | 128.6 | 344.3 |
| BED OCCUPANCY RATES (per cent) | | | | | | |
| <i>March quarter 1993</i> | 45.8 | 33.4 | 33.8 | 34.6 | 48.5 | 38.5 |
| <i>1994—</i> | | | | | | |
| January | 39.4 | 35.2 | 30.6 | 35.4 | 43.4 | 37.0 |
| February | 46.5 | 30.6 | 28.6 | 34.8 | 46.9 | 37.4 |
| March | 45.6 | 32.2 | 32.4 | 35.5 | 45.4 | 38.0 |
| <i>March quarter 1994</i> | 43.8 | 32.7 | 30.6 | 35.2 | 45.2 | 37.5 |
| GUEST ARRIVALS ('000) | | | | | | |
| <i>March quarter 1993</i> | 102.0 | 85.5 | 42.1 | 70.8 | 74.6 | 187.5 |
| <i>1994—</i> | | | | | | |
| January | 28.9 | 28.3 | 6.3 | 28.6 | 22.3 | 57.2 |
| February | 32.3 | 24.8 | 6.2 | 27.7 | 23.1 | 57.0 |
| March | 32.9 | 28.3 | 7.5 | 29.8 | 23.9 | 61.2 |
| <i>March quarter 1994</i> | 94.0 | 81.4 | 19.9 | 86.2 | 69.3 | 175.4 |
| AVERAGE LENGTH OF STAY (days) | | | | | | |
| <i>March quarter 1993</i> | 1.7 | 2.1 | 2.0 | 1.9 | 1.8 | 1.9 |
| <i>March quarter 1994</i> | 1.8 | 2.1 | 2.6 | 1.9 | 1.9 | 2.0 |
| TAKINGS FROM ACCOMMODATION (\$'000) | | | | | | |
| <i>March quarter 1993</i> | 10,166 | 6,549 | 3,042 | 5,361 | 8,311 | 16,715 |
| <i>1994—</i> | | | | | | |
| January | 2,853 | 2,101 | 471 | 2,066 | 2,417 | 4,955 |
| February | 3,805 | 2,083 | 525 | 2,265 | 3,098 | 5,888 |
| March | 4,234 | 2,398 | 637 | 2,562 | 3,433 | 6,632 |
| <i>March quarter 1994</i> | 10,892 | 6,583 | 1,634 | 6,894 | 8,948 | 17,475 |

(a) For footnote see end of table.

TABLE 5 — HOTELS, MOTELS AND GUEST HOUSES WITH FACILITIES BY STAR GRADING (a)—continued
AUSTRALIA

| Particulars | Licensed hotels with facilities | Motels and guest houses | Star grading | | | | | Ungraded | Total |
|---|---------------------------------|-------------------------|--------------|---------|---------|---------|---------|----------|----------|
| | | | 1 | 2 | 3 | 4 | 5 | | |
| ESTABLISHMENTS, CAPACITY AND EMPLOYMENT | | | | | | | | | |
| <i>March quarter 1993—</i> | | | | | | | | | |
| Establishments | 1,183 | 3,709 | 146 | 1,829 | 1,910 | 263 | 59 | 685 | 4,892 |
| Guest rooms | 65,114 | 101,081 | 2,125 | 38,547 | 63,940 | 28,087 | 18,383 | 15,113 | 166,195 |
| Bed spaces | 171,024 | 304,537 | 5,421 | 112,608 | 189,716 | 81,405 | 44,304 | 42,107 | 475,561 |
| Employment (persons) | 62,846 | 37,427 | 1,462 | 17,552 | 27,855 | 21,105 | 22,567 | 9,732 | 100,273 |
| <i>March quarter 1994—</i> | | | | | | | | | |
| Establishments | 1,131 | 3,684 | 114 | 1,774 | 1,967 | 299 | 61 | 600 | 4,815 |
| Guest rooms | 66,386 | 99,876 | 1,776 | 37,595 | 65,880 | 30,311 | 18,131 | 12,569 | 166,262 |
| Bed spaces | 175,508 | 302,063 | 4,644 | 109,840 | 196,992 | 86,707 | 44,200 | 35,188 | 477,571 |
| Employment (persons) | 65,257 | 36,616 | 1,164 | 16,746 | 29,376 | 24,274 | 22,437 | 7,876 | 101,873 |
| ROOM NIGHTS OCCUPIED ('000) | | | | | | | | | |
| <i>March quarter 1993</i> | 3,228.5 | 4,598.8 | 57.8 | 1,479.8 | 3,073.7 | 1,622.8 | 1,083.8 | 509.3 | 7,827.3 |
| <i>1994—</i> | | | | | | | | | |
| January | 1,158.3 | 1,650.6 | 17.7 | 527.4 | 1,144.4 | 597.1 | 372.4 | 149.9 | 2,808.9 |
| February | 1,171.3 | 1,398.7 | 15.6 | 421.7 | 994.2 | 603.2 | 396.0 | 139.3 | 2,569.9 |
| March | 1,318.3 | 1,657.8 | 17.7 | 507.3 | 1,177.8 | 683.8 | 428.0 | 161.5 | 2,976.1 |
| <i>March quarter 1994</i> | 3,647.9 | 4,707.0 | 50.9 | 1,456.5 | 3,316.4 | 1,884.1 | 1,196.4 | 450.7 | 8,355.0 |
| ROOM OCCUPANCY RATES (per cent) | | | | | | | | | |
| <i>March quarter 1993</i> | 55.4 | 50.6 | 30.2 | 42.8 | 53.5 | 64.7 | 65.5 | 37.6 | 52.5 |
| <i>1994—</i> | | | | | | | | | |
| January | 56.3 | 53.3 | 32.1 | 45.3 | 56.0 | 63.6 | 66.3 | 38.6 | 54.5 |
| February | 63.1 | 50.1 | 31.3 | 40.1 | 53.9 | 71.1 | 78.0 | 39.7 | 55.3 |
| March | 64.1 | 53.6 | 32.1 | 43.6 | 57.7 | 72.8 | 76.1 | 41.7 | 57.8 |
| <i>March quarter 1994</i> | 61.1 | 52.4 | 31.9 | 43.1 | 56.0 | 69.1 | 73.3 | 40.0 | 55.9 |
| GUEST NIGHTS ('000) | | | | | | | | | |
| <i>March quarter 1993</i> | 5,415.1 | 8,615.9 | 98.0 | 2,731.8 | 5,691.2 | 2,833.3 | 1,744.9 | 931.9 | 14,031.0 |
| <i>1994—</i> | | | | | | | | | |
| January | 2,124.8 | 3,493.3 | 31.2 | 1,065.6 | 2,394.4 | 1,184.5 | 654.4 | 288.1 | 5,618.1 |
| February | 1,887.2 | 2,424.3 | 24.4 | 720.9 | 1,710.7 | 985.2 | 637.0 | 233.3 | 4,311.5 |
| March | 2,133.9 | 2,897.8 | 27.2 | 876.7 | 2,046.5 | 1,124.6 | 686.3 | 270.4 | 5,031.7 |
| <i>March quarter 1994</i> | 6,145.9 | 8,815.4 | 82.8 | 2,663.1 | 6,151.5 | 3,294.3 | 1,977.7 | 791.9 | 14,961.3 |
| BED OCCUPANCY RATES (per cent) | | | | | | | | | |
| <i>March quarter 1993</i> | 35.4 | 31.5 | 20.1 | 27.1 | 33.4 | 39.0 | 43.7 | 24.7 | 32.9 |
| <i>1994—</i> | | | | | | | | | |
| January | 39.1 | 37.3 | 21.6 | 31.3 | 39.2 | 44.1 | 47.8 | 26.5 | 38.0 |
| February | 38.4 | 28.7 | 18.8 | 23.5 | 31.0 | 40.6 | 51.5 | 23.8 | 32.3 |
| March | 39.3 | 31.0 | 18.9 | 25.8 | 33.5 | 41.9 | 50.1 | 24.9 | 34.0 |
| <i>March quarter 1994</i> | 38.9 | 32.5 | 19.8 | 27.0 | 34.7 | 42.2 | 49.7 | 25.1 | 34.8 |
| GUEST ARRIVALS ('000) | | | | | | | | | |
| <i>March quarter 1993</i> | 2,258.3 | 4,481.7 | 57.7 | 1,538.7 | 2,928.4 | 1,144.1 | 666.4 | 404.7 | 6,740.0 |
| <i>1994—</i> | | | | | | | | | |
| January | 870.7 | 1,774.2 | 16.7 | 603.3 | 1,183.2 | 483.2 | 231.2 | 127.3 | 2,644.9 |
| February | 853.9 | 1,299.5 | 12.4 | 421.3 | 897.5 | 456.8 | 257.7 | 107.7 | 2,153.4 |
| March | 949.0 | 1,567.4 | 15.1 | 510.6 | 1,073.8 | 517.9 | 270.1 | 128.9 | 2,516.4 |
| <i>March quarter 1994</i> | 2,673.6 | 4,641.1 | 44.2 | 1,535.1 | 3,154.5 | 1,457.9 | 759.0 | 363.9 | 7,314.7 |
| AVERAGE LENGTH OF STAY (days) | | | | | | | | | |
| <i>March quarter 1993</i> | 2.4 | 1.9 | 1.7 | 1.8 | 1.9 | 2.5 | 2.6 | 2.3 | 2.1 |
| <i>March quarter 1994</i> | 2.3 | 1.9 | 1.9 | 1.7 | 2.0 | 2.3 | 2.6 | 2.2 | 2.0 |
| TAKINGS FROM ACCOMMODATION (\$'000) | | | | | | | | | |
| <i>March quarter 1993</i> | 326,653 | 305,827 | 2,377 | 73,103 | 207,622 | 162,926 | 148,842 | 37,611 | 632,480 |
| <i>1994—</i> | | | | | | | | | |
| January | 120,634 | 115,062 | 792 | 27,515 | 82,720 | 61,481 | 53,057 | 10,131 | 235,697 |
| February | 123,574 | 92,739 | 667 | 20,119 | 67,968 | 61,464 | 56,790 | 9,303 | 216,312 |
| March | 141,397 | 110,508 | 722 | 24,406 | 81,071 | 71,577 | 63,359 | 10,769 | 251,905 |
| <i>March quarter 1994</i> | 385,605 | 318,309 | 2,181 | 72,040 | 231,759 | 194,523 | 173,207 | 30,204 | 703,914 |

(a) From December quarter 1993, establishments with fewer than 5 rooms have been formally excluded from the scope of this collection. See Explanatory Note 2 (page 20).

TABLE 6 — HOLIDAY FLATS, UNITS AND HOUSES BY STATE/TERRITORY, AUSTRALIA

| Particulars | New South Wales | Victoria | Queensland | South Australia | Western Australia | Tasmania | Northern Territory | Australian Capital Territory | Australia |
|---|--------------------|---------------|---------------|--------------------|----------------------|--------------|-----------------------|------------------------------------|----------------|
| LETTING ENTITIES, CAPACITY AND EMPLOYMENT | | | | | | | | | |
| <i>March quarter 1993—</i> | | | | | | | | | |
| Letting entities | 418 | 186 | 592 | 83 | 98 | 45 | 10 | 14 | 1,446 |
| Flats, units and houses | | | | | | | | | |
| Single bedroom | 1,971 | 980 | 3,451 | 359 | 510 | 228 | 141 | 133 | 7,773 |
| Multiple bedroom | 8,537 | 2,331 | 12,346 | 954 | 1,417 | 502 | 107 | 354 | 26,548 |
| <i>Total flats, units and houses</i> | <i>10,508</i> | <i>3,311</i> | <i>15,797</i> | <i>1,313</i> | <i>1,927</i> | <i>730</i> | <i>248</i> | <i>487</i> | <i>34,321</i> |
| Bed spaces | 48,492 | 15,279 | 63,089 | 6,491 | 9,055 | 3,258 | 994 | 1,806 | 148,464 |
| Employment (persons) (a) | 1,093 | 658 | 1,968 | 248 | 443 | 304 | 54 | 87 | 4,855 |
| <i>March quarter 1994—</i> | | | | | | | | | |
| Letting entities | 404 | 210 | 605 | 86 | 107 | 53 | 10 | 16 | 1,491 |
| Flats, units and houses | | | | | | | | | |
| Single bedroom | 1,931 | 1,013 | 3,497 | 304 | 558 | 265 | 142 | 138 | 7,848 |
| Multiple bedroom | 8,458 | 2,558 | 12,824 | 1,017 | 1,640 | 532 | 108 | 425 | 27,562 |
| <i>Total flats, units and houses</i> | <i>10,389</i> | <i>3,571</i> | <i>16,321</i> | <i>1,321</i> | <i>2,198</i> | <i>797</i> | <i>250</i> | <i>563</i> | <i>35,410</i> |
| Bed spaces | 48,601 | 16,120 | 65,990 | 6,719 | 10,249 | 3,511 | 1,022 | 2,113 | 154,325 |
| Employment (persons) (a) | 1,154 | 702 | 2,125 | 275 | 471 | 338 | 50 | 106 | 5,221 |
| UNIT NIGHTS OCCUPIED ('000) | | | | | | | | | |
| <i>March quarter 1993</i> | <i>480.7</i> | <i>144.3</i> | <i>810.8</i> | <i>59.0</i> | <i>104.3</i> | <i>47.5</i> | <i>12.8</i> | <i>31.0</i> | <i>1,690.3</i> |
| <i>1994—</i> | | | | | | | | | |
| January | 221.7 | 67.6 | 388.1 | 28.7 | 50.5 | 18.7 | 4.9 | 11.3 | 791.6 |
| February | 131.3 | 40.5 | 232.4 | 15.2 | 33.8 | 14.6 | 4.6 | 9.9 | 482.4 |
| March | 130.8 | 46.0 | 242.4 | 16.5 | 38.4 | 17.0 | 4.8 | 11.8 | 507.8 |
| <i>March quarter 1994</i> | <i>483.8</i> | <i>154.1</i> | <i>862.9</i> | <i>60.5</i> | <i>122.7</i> | <i>50.3</i> | <i>14.4</i> | <i>33.1</i> | <i>1,781.8</i> |
| UNIT OCCUPANCY RATES (per cent) | | | | | | | | | |
| <i>March quarter 1993</i> | <i>51.0</i> | <i>48.6</i> | <i>57.0</i> | <i>49.9</i> | <i>60.5</i> | <i>72.3</i> | <i>57.4</i> | <i>70.7</i> | <i>54.8</i> |
| <i>1994—</i> | | | | | | | | | |
| January | 68.8 | 62.4 | 76.7 | 70.2 | 74.1 | 75.7 | 63.5 | 64.9 | 72.3 |
| February | 45.2 | 41.4 | 50.9 | 41.1 | 54.9 | 65.5 | 65.9 | 62.8 | 48.8 |
| March | 40.6 | 42.5 | 48.0 | 40.3 | 56.4 | 68.6 | 62.3 | 67.7 | 46.4 |
| <i>March quarter 1994</i> | <i>51.8</i> | <i>49.0</i> | <i>58.8</i> | <i>50.9</i> | <i>62.0</i> | <i>70.1</i> | <i>63.8</i> | <i>65.2</i> | <i>56.1</i> |
| UNIT LETTINGS ('000) | | | | | | | | | |
| <i>March quarter 1993</i> | <i>74.5</i> | <i>31.4</i> | <i>124.4</i> | <i>10.1</i> | <i>21.3</i> | <i>21.9</i> | <i>2.4</i> | <i>4.4</i> | <i>290.4</i> |
| <i>1994—</i> | | | | | | | | | |
| January | 31.4 | 13.4 | 54.8 | 4.3 | 8.7 | 8.0 | 1.3 | 1.6 | 123.5 |
| February | 21.7 | 10.5 | 37.2 | 2.7 | 7.1 | 6.9 | 1.2 | 1.5 | 88.8 |
| March | 23.7 | 12.7 | 42.2 | 3.3 | 8.8 | 8.4 | 1.4 | 1.8 | 102.3 |
| <i>March quarter 1994</i> | <i>76.8</i> | <i>36.6</i> | <i>134.2</i> | <i>10.3</i> | <i>24.6</i> | <i>23.3</i> | <i>4.0</i> | <i>4.9</i> | <i>314.6</i> |
| AVERAGE LENGTH OF STAY (days) | | | | | | | | | |
| <i>March quarter 1993</i> | <i>6.5</i> | <i>4.6</i> | <i>6.5</i> | <i>5.8</i> | <i>4.9</i> | <i>2.2</i> | <i>5.3</i> | <i>7.1</i> | <i>5.8</i> |
| <i>1994—</i> | | | | | | | | | |
| January | 7.1 | 5.0 | 7.1 | 6.7 | 5.8 | 2.3 | 3.7 | 7.0 | 6.4 |
| February | 6.1 | 3.9 | 6.3 | 5.6 | 4.8 | 2.1 | 3.7 | 6.7 | 5.4 |
| March | 5.5 | 3.6 | 5.7 | 5.1 | 4.4 | 2.0 | 3.4 | 6.5 | 5.0 |
| <i>March quarter 1994</i> | <i>6.3</i> | <i>4.2</i> | <i>6.4</i> | <i>5.9</i> | <i>5.0</i> | <i>2.2</i> | <i>3.6</i> | <i>6.7</i> | <i>5.7</i> |
| TAKINGS FROM ACCOMMODATION (\$'000) | | | | | | | | | |
| <i>March quarter 1993</i> | <i>29,679</i> | <i>10,435</i> | <i>49,462</i> | <i>3,263</i> | <i>5,829</i> | <i>3,471</i> | <i>750</i> | <i>2,672</i> | <i>105,561</i> |
| <i>1994—</i> | | | | | | | | | |
| January | 16,206 | 5,038 | 28,231 | 1,744 | 3,174 | 1,407 | 331 | 1,006 | 57,138 |
| February | 7,031 | 2,934 | 13,481 | 868 | 2,092 | 1,087 | 260 | 837 | 28,590 |
| March | 7,226 | 3,414 | 14,002 | 935 | 2,318 | 1,231 | 307 | 1,008 | 30,440 |
| <i>March quarter 1994</i> | <i>30,463</i> | <i>11,386</i> | <i>55,714</i> | <i>3,546</i> | <i>7,584</i> | <i>3,725</i> | <i>898</i> | <i>2,851</i> | <i>116,167</i> |

(a) Employment numbers exclude real estate agents and their employees.

TABLE 7 — CARAVAN PARKS BY TYPE AND BY STATE/TERRITORY, AUSTRALIA

| Particulars | New South Wales | | | Victoria | | | Queensland | | |
|---|-----------------|----------------|----------------|----------------|---------------|----------------|---------------|----------------|----------------|
| | Short-term | Long-term | Total | Short-term | Long-term | Total | Short-term | Long-term | Total |
| ESTABLISHMENTS, CAPACITY AND EMPLOYMENT | | | | | | | | | |
| <i>March quarter 1993—</i> | | | | | | | | | |
| Establishments | 410 | 384 | 794 | 444 | 151 | 595 | 225 | 401 | 626 |
| Capacity | | | | | | | | | |
| On-site vans | 2,909 | 3,868 | 6,777 | 2,234 | 1,860 | 4,094 | 1,132 | 4,586 | 5,718 |
| Other powered sites | 36,845 | 26,163 | 63,008 | 36,228 | 8,305 | 44,533 | 10,567 | 21,924 | 32,491 |
| Unpowered sites | 14,550 | 6,173 | 20,723 | 13,313 | 1,852 | 15,165 | 8,492 | 5,277 | 13,769 |
| Cabins, flats, etc. | 2,585 | 1,956 | 4,541 | 2,160 | 753 | 2,913 | 1,116 | 2,214 | 3,330 |
| <i>Total capacity</i> | <i>56,889</i> | <i>38,160</i> | <i>95,049</i> | <i>53,935</i> | <i>12,770</i> | <i>66,705</i> | <i>21,307</i> | <i>34,001</i> | <i>55,308</i> |
| Sites occupied by long-term guests | 2,195 | 13,639 | 15,834 | 1,909 | 4,584 | 6,493 | 1,819 | 15,119 | 16,938 |
| Other sites permanently reserved | 18,588 | 3,956 | 22,544 | 14,444 | 417 | 14,861 | 546 | 657 | 1,203 |
| Employment (persons) | 1,645 | 1,348 | 2,993 | 1,403 | 463 | 1,866 | 738 | 1,434 | 2,172 |
| <i>March quarter 1994—</i> | | | | | | | | | |
| Establishments | 471 | 326 | 797 | 441 | 158 | 599 | 232 | 397 | 629 |
| Capacity | | | | | | | | | |
| On-site vans | 3,274 | 3,665 | 6,939 | 2,055 | 1,940 | 3,995 | 1,062 | 4,763 | 5,825 |
| Other powered sites | 42,501 | 20,657 | 63,158 | 36,452 | 8,669 | 45,121 | 10,831 | 21,424 | 32,255 |
| Unpowered sites | 15,526 | 4,835 | 20,361 | 13,261 | 2,066 | 15,327 | 8,261 | 5,162 | 13,423 |
| Cabins, flats, etc. | 2,876 | 1,915 | 4,791 | 2,284 | 920 | 3,204 | 1,243 | 2,308 | 3,551 |
| <i>Total capacity</i> | <i>64,177</i> | <i>31,072</i> | <i>95,249</i> | <i>54,052</i> | <i>13,595</i> | <i>67,647</i> | <i>21,397</i> | <i>33,657</i> | <i>55,054</i> |
| Sites occupied by long-term guests | 3,544 | 12,235 | 15,779 | 1,849 | 4,726 | 6,575 | 1,769 | 14,659 | 16,428 |
| Other sites permanently reserved | 21,998 | 1,295 | 23,293 | 14,976 | 385 | 15,361 | 675 | 497 | 1,172 |
| Employment (persons) | 1,893 | 1,183 | 3,076 | 1,433 | 484 | 1,917 | 806 | 1,458 | 2,264 |
| SITE NIGHTS OCCUPIED ('000) | | | | | | | | | |
| <i>March quarter 1993</i> | <i>2,734.6</i> | <i>1,927.9</i> | <i>4,662.5</i> | <i>2,172.8</i> | <i>552.5</i> | <i>2,725.4</i> | <i>491.3</i> | <i>1,617.1</i> | <i>2,108.4</i> |
| <i>1994—</i> | | | | | | | | | |
| January | 1,297.4 | 558.6 | 1,856.0 | 919.3 | 202.9 | 1,122.2 | 232.9 | 566.4 | 799.3 |
| February | 924.7 | 443.1 | 1,367.8 | 609.3 | 178.6 | 787.9 | 136.7 | 493.5 | 630.2 |
| March | 1,002.3 | 488.3 | 1,490.6 | 675.6 | 196.7 | 872.3 | 157.9 | 547.6 | 705.5 |
| <i>March quarter 1994</i> | <i>3,224.5</i> | <i>1,490.0</i> | <i>4,714.4</i> | <i>2,204.2</i> | <i>578.1</i> | <i>2,782.3</i> | <i>527.4</i> | <i>1,607.6</i> | <i>2,135.0</i> |
| SITE OCCUPANCY RATES (per cent) | | | | | | | | | |
| March quarter 1993 | 53.5 | 56.2 | 54.6 | 44.8 | 48.1 | 45.4 | 25.6 | 52.8 | 42.4 |
| <i>1994—</i> | | | | | | | | | |
| January | 65.2 | 58.0 | 62.9 | 54.9 | 48.1 | 53.5 | 35.1 | 54.3 | 46.8 |
| February | 51.5 | 50.9 | 51.3 | 40.3 | 46.9 | 41.6 | 22.9 | 52.4 | 41.0 |
| March | 50.4 | 50.7 | 50.5 | 40.3 | 46.7 | 41.6 | 23.9 | 52.5 | 41.4 |
| March quarter 1994 | 55.8 | 53.3 | 55.0 | 45.3 | 47.2 | 45.7 | 27.5 | 53.1 | 43.1 |
| TAKINGS FROM ACCOMMODATION (\$'000) | | | | | | | | | |
| <i>March quarter 1993</i> | <i>26,274</i> | <i>19,030</i> | <i>45,304</i> | <i>16,443</i> | <i>5,626</i> | <i>22,069</i> | <i>5,734</i> | <i>14,763</i> | <i>20,497</i> |
| <i>1994—</i> | | | | | | | | | |
| January | 14,895 | 6,900 | 21,794 | 8,974 | 2,202 | 11,176 | 2,890 | 5,641 | 8,531 |
| February | 7,362 | 4,732 | 12,093 | 3,738 | 1,843 | 5,581 | 1,504 | 4,673 | 6,178 |
| March | 7,698 | 5,270 | 12,968 | 4,472 | 2,071 | 6,542 | 1,891 | 5,279 | 7,170 |
| <i>March quarter 1994</i> | <i>29,955</i> | <i>16,901</i> | <i>46,856</i> | <i>17,183</i> | <i>6,116</i> | <i>23,299</i> | <i>6,285</i> | <i>15,594</i> | <i>21,878</i> |

TABLE 7 — CARAVAN PARKS BY TYPE AND BY STATE/TERRITORY, AUSTRALIA—continued

| Particulars | South Australia | | | Western Australia | | | Tasmania | | |
|--|-----------------|--------------|---------------|-------------------|---------------|----------------|--------------|-------------|--------------|
| | Short-term | Long-term | Total | Short-term | Long-term | Total | Short-term | Long-term | Total |
| ESTABLISHMENTS, CAPACITY AND EMPLOYMENT | | | | | | | | | |
| <i>March quarter 1993—</i> | | | | | | | | | |
| Establishments | 171 | 40 | 211 | 185 | 119 | 304 | 57 | 10 | 67 |
| Capacity | | | | | | | | | |
| On-site vans | 954 | 251 | 1,205 | 1,072 | 1,198 | 2,270 | 289 | 107 | 396 |
| Other powered sites | 12,093 | 2,732 | 14,825 | 10,554 | 8,171 | 18,725 | 2,846 | 411 | 3,257 |
| Unpowered sites | 5,881 | 985 | 6,866 | 3,984 | 2,026 | 6,010 | 2,152 | 191 | 2,343 |
| Cabins, flats, etc. | 1,231 | 339 | 1,570 | 801 | 498 | 1,299 | 316 | 59 | 375 |
| <i>Total capacity</i> | <i>20,159</i> | <i>4,307</i> | <i>24,466</i> | <i>16,411</i> | <i>11,893</i> | <i>28,304</i> | <i>5,603</i> | <i>768</i> | <i>6,371</i> |
| Sites occupied by long-term guests | 643 | 1,380 | 2,023 | 918 | 3,888 | 4,806 | 270 | 158 | 428 |
| Other sites permanently reserved | 1,330 | 33 | 1,363 | 1,588 | 602 | 2,190 | 806 | 49 | 855 |
| Employment (persons) | 645 | 148 | 793 | 632 | 418 | 1,050 | 193 | 31 | 224 |
| <i>March quarter 1994—</i> | | | | | | | | | |
| Establishments | 166 | 44 | 210 | 198 | 113 | 311 | 58 | 12 | 70 |
| Capacity | | | | | | | | | |
| On-site vans | 934 | 245 | 1,179 | 1,173 | 1,087 | 2,260 | 284 | 120 | 404 |
| Other powered sites | 11,908 | 2,859 | 14,767 | 11,838 | 7,413 | 19,251 | 2,943 | 519 | 3,462 |
| Unpowered sites | 5,510 | 1,042 | 6,552 | 4,018 | 1,880 | 5,898 | 2,197 | 240 | 2,437 |
| Cabins, flats, etc. | 1,254 | 390 | 1,644 | 843 | 565 | 1,408 | 315 | 97 | 412 |
| <i>Total capacity</i> | <i>19,606</i> | <i>4,536</i> | <i>24,142</i> | <i>17,872</i> | <i>10,945</i> | <i>28,817</i> | <i>5,739</i> | <i>976</i> | <i>6,715</i> |
| Sites occupied by long-term guests | 604 | 1,378 | 1,982 | 1,221 | 3,833 | 5,054 | 212 | 190 | 402 |
| Other sites permanently reserved | 1,505 | 37 | 1,542 | 1,937 | 273 | 2,210 | 858 | 16 | 874 |
| Employment (persons) | 594 | 155 | 749 | 690 | 390 | 1,080 | 184 | 43 | 227 |
| SITE NIGHTS OCCUPIED ('000) | | | | | | | | | |
| <i>March quarter 1993</i> | <i>483.2</i> | <i>153.1</i> | <i>636.4</i> | <i>488.3</i> | <i>489.6</i> | <i>977.9</i> | <i>193.8</i> | <i>29.9</i> | <i>223.8</i> |
| <i>1994—</i> | | | | | | | | | |
| January | 219.8 | 55.2 | 274.9 | 241.3 | 159.4 | 400.7 | 76.7 | 12.2 | 88.9 |
| February | 128.1 | 47.0 | 175.1 | 153.5 | 138.1 | 291.6 | 56.1 | 9.8 | 65.9 |
| March | 152.5 | 53.8 | 206.2 | 168.5 | 154.1 | 322.6 | 54.0 | 11.4 | 65.4 |
| <i>March quarter 1994</i> | <i>500.3</i> | <i>155.9</i> | <i>656.2</i> | <i>563.3</i> | <i>451.5</i> | <i>1,014.8</i> | <i>186.8</i> | <i>33.4</i> | <i>220.2</i> |
| SITE OCCUPANCY RATES (per cent) | | | | | | | | | |
| March quarter 1993 | 26.6 | 39.5 | 28.9 | 33.1 | 45.8 | 38.4 | 38.4 | 43.3 | 39.0 |
| <i>1994—</i> | | | | | | | | | |
| January | 36.2 | 39.2 | 36.7 | 43.6 | 47.0 | 44.8 | 43.1 | 40.3 | 42.7 |
| February | 23.3 | 37.0 | 25.9 | 30.8 | 45.1 | 36.2 | 34.9 | 36.0 | 35.1 |
| March | 25.1 | 38.2 | 27.6 | 30.6 | 45.4 | 36.2 | 30.3 | 37.7 | 31.4 |
| March quarter 1994 | 28.4 | 38.2 | 30.2 | 35.1 | 45.8 | 39.2 | 36.2 | 38.1 | 36.4 |
| TAKINGS FROM ACCOMMODATION (\$'000) | | | | | | | | | |
| <i>March quarter 1993</i> | <i>6,084</i> | <i>1,430</i> | <i>7,514</i> | <i>5,650</i> | <i>5,048</i> | <i>10,698</i> | <i>2,127</i> | <i>372</i> | <i>2,499</i> |
| <i>1994—</i> | | | | | | | | | |
| January | 3,213 | 587 | 3,800 | 3,225 | 1,938 | 5,163 | 895 | 155 | 1,050 |
| February | 1,545 | 461 | 2,006 | 1,579 | 1,572 | 3,151 | 638 | 154 | 792 |
| March | 1,854 | 532 | 2,386 | 1,860 | 1,780 | 3,640 | 587 | 166 | 753 |
| <i>March quarter 1994</i> | <i>6,611</i> | <i>1,580</i> | <i>8,192</i> | <i>6,665</i> | <i>5,290</i> | <i>11,954</i> | <i>2,120</i> | <i>475</i> | <i>2,595</i> |

TABLE 7 — CARAVAN PARKS BY TYPE AND BY STATE/TERRITORY, AUSTRALIA—continued

| Particulars | Northern Territory | | | Australian Capital Territory | Australia | | |
|--|--------------------|---------------|--------------|------------------------------------|----------------|----------------|-----------------|
| | Short- term | Long- term | Total | Total | Short- term | Long- term | Total |
| ESTABLISHMENTS, CAPACITY AND EMPLOYMENT | | | | | | | |
| <i>March quarter 1993—</i> | | | | | | | |
| Establishments | 55 | 24 | 79 | 5 | 1,547 | 1,134 | 2,681 |
| Capacity | | | | | | | |
| On-site vans | 85 | 233 | 318 | 150 | 8,675 | 12,253 | 20,928 |
| Other powered sites | 2,366 | 1,850 | 4,216 | 495 | 111,499 | 70,051 | 181,550 |
| Unpowered sites | 3,715 | 712 | 4,427 | 419 | 52,087 | 17,635 | 69,722 |
| Cabins, flats, etc. | 150 | 72 | 222 | 10 | 8,359 | 5,901 | 14,260 |
| <i>Total capacity</i> | <i>6,316</i> | <i>2,867</i> | <i>9,183</i> | <i>1,074</i> | <i>180,620</i> | <i>105,840</i> | <i>286,460</i> |
| Sites occupied by long-term guests | 159 | 923 | 1,082 | 316 | 7,913 | 40,007 | 47,920 |
| Other sites permanently reserved | 7 | 7 | 14 | — | 37,309 | 5,721 | 43,030 |
| Employment (persons) | 270 | 92 | 362 | 28 | 5,526 | 3,962 | 9,488 |
| <i>March quarter 1994—</i> | | | | | | | |
| Establishments | 55 | 25 | 80 | 5 | 1,621 | 1,080 | 2,701 |
| Capacity | | | | | | | |
| On-site vans | 64 | 250 | 314 | 151 | 8,846 | 12,221 | 21,067 |
| Other powered sites | 2,573 | 1,897 | 4,470 | 494 | 119,046 | 63,932 | 182,978 |
| Unpowered sites | 3,088 | 784 | 3,872 | 419 | 51,861 | 16,428 | 68,289 |
| Cabins, flats, etc. | 151 | 73 | 224 | 10 | 8,966 | 6,278 | 15,244 |
| <i>Total capacity</i> | <i>5,876</i> | <i>3,004</i> | <i>8,880</i> | <i>1,074</i> | <i>188,719</i> | <i>98,859</i> | <i>287,578</i> |
| Sites occupied by long-term guests | 187 | 878 | 1,065 | 306 | 9,386 | 38,205 | 47,591 |
| Other sites permanently reserved | 5 | 8 | 13 | — | 41,954 | 2,511 | 44,465 |
| Employment (persons) | 213 | 86 | 299 | 46 | 5,813 | 3,845 | 9,658 |
| SITE NIGHTS OCCUPIED ('000) | | | | | | | |
| <i>March quarter 1993</i> | <i>51.4</i> | <i>97.1</i> | <i>148.5</i> | <i>41.9</i> | <i>6,615.5</i> | <i>4,909.2</i> | <i>11,524.6</i> |
| <i>1994—</i> | | | | | | | |
| January | 14.9 | 32.0 | 46.9 | 14.1 | 3,002.2 | 1,600.7 | 4,603.0 |
| February | 11.9 | 29.1 | 41.0 | 11.7 | 2,020.2 | 1,351.0 | 3,371.1 |
| March | 17.8 | 32.9 | 50.6 | 12.7 | 2,228.6 | 1,497.4 | 3,726.0 |
| <i>March quarter 1994</i> | <i>44.5</i> | <i>94.0</i> | <i>138.5</i> | <i>38.5</i> | <i>7,251.0</i> | <i>4,449.1</i> | <i>11,700.1</i> |
| SITE OCCUPANCY RATES (per cent) | | | | | | | |
| March quarter 1993 | 9.0 | 37.6 | 18.0 | 43.3 | 40.7 | 51.6 | 44.7 |
| <i>1994—</i> | | | | | | | |
| January | 8.2 | 34.4 | 17.0 | 42.3 | 51.3 | 52.2 | 51.6 |
| February | 7.2 | 34.6 | 16.5 | 38.9 | 38.3 | 48.8 | 41.9 |
| March | 9.7 | 35.3 | 18.4 | 38.3 | 38.1 | 48.9 | 41.8 |
| March quarter 1994 | 8.4 | 34.8 | 17.3 | 39.9 | 42.7 | 50.0 | 45.2 |
| TAKINGS FROM ACCOMMODATION (\$'000) | | | | | | | |
| <i>March quarter 1993</i> | <i>664</i> | <i>880</i> | <i>1,544</i> | <i>842</i> | <i>62,977</i> | <i>47,990</i> | <i>110,967</i> |
| <i>1994—</i> | | | | | | | |
| January | 229 | 312 | 540 | 309 | 34,320 | 18,043 | 52,363 |
| February | 179 | 276 | 454 | 210 | 16,543 | 13,921 | 30,465 |
| March | 259 | 312 | 571 | 238 | 18,620 | 15,648 | 34,269 |
| <i>March quarter 1994</i> | <i>666</i> | <i>899</i> | <i>1,566</i> | <i>757</i> | <i>69,484</i> | <i>47,613</i> | <i>117,097</i> |

TABLE 8 — VISITOR HOSTELS BY STATE/TERRITORY, AUSTRALIA

| <i>Particulars</i> | <i>New South Wales (a)</i> | <i>Victoria</i> | <i>Queensland</i> | <i>South Australia</i> | <i>Western Australia</i> | <i>Tasmania</i> | <i>Northern Territory</i> | <i>Australia</i> |
|---|--------------------------------|-----------------|-------------------|----------------------------|------------------------------|-----------------|-------------------------------|------------------|
| ESTABLISHMENTS, CAPACITY AND EMPLOYMENT | | | | | | | | |
| <i>March quarter 1993—</i> | | | | | | | | |
| Establishments | 77 | 42 | 121 | 41 | 47 | 39 | 37 | 404 |
| Bed spaces | 5,109 | 2,663 | 7,860 | 1,970 | 2,792 | 1,458 | 3,091 | 24,943 |
| Employment (persons) | 288 | 145 | 526 | 127 | 136 | 92 | 166 | 1,480 |
| <i>March quarter 1994—</i> | | | | | | | | |
| Establishments | 79 | 49 | 122 | 44 | 54 | 39 | 39 | 426 |
| Bed spaces | 5,129 | 2,789 | 8,233 | 2,098 | 3,068 | 1,487 | 2,944 | 25,748 |
| Employment (persons) | 297 | 160 | 550 | 144 | 135 | 108 | 141 | 1,535 |
| GUEST NIGHTS ('000) | | | | | | | | |
| <i>March quarter 1993</i> | <i>265.3</i> | <i>109.7</i> | <i>318.3</i> | <i>59.1</i> | <i>108.3</i> | <i>33.2</i> | <i>106.3</i> | <i>1,000.2</i> |
| <i>1994—</i> | | | | | | | | |
| January | 97.9 | 40.5 | 126.3 | 23.0 | 39.5 | 14.7 | 32.1 | 374.0 |
| February | 82.8 | 35.8 | 102.7 | 20.7 | 35.8 | 10.5 | 30.8 | 319.2 |
| March | 87.9 | 41.4 | 110.4 | 23.4 | 38.7 | 10.4 | 37.4 | 349.7 |
| <i>March quarter 1994</i> | <i>268.7</i> | <i>117.7</i> | <i>339.3</i> | <i>67.1</i> | <i>114.0</i> | <i>35.7</i> | <i>100.4</i> | <i>1,042.9</i> |
| BED OCCUPANCY RATES (per cent) | | | | | | | | |
| <i>March quarter 1993</i> | <i>58.3</i> | <i>46.0</i> | <i>45.2</i> | <i>33.6</i> | <i>43.1</i> | <i>25.3</i> | <i>38.2</i> | <i>44.8</i> |
| <i>1994—</i> | | | | | | | | |
| January | 61.6 | 46.8 | 50.1 | 35.4 | 41.5 | 32.0 | 35.2 | 47.1 |
| February | 57.7 | 45.8 | 45.1 | 35.2 | 42.3 | 25.3 | 37.4 | 44.5 |
| March | 55.3 | 47.9 | 43.6 | 36.0 | 41.9 | 22.6 | 41.5 | 44.1 |
| <i>March quarter 1994</i> | <i>58.2</i> | <i>46.9</i> | <i>46.3</i> | <i>35.5</i> | <i>41.9</i> | <i>26.7</i> | <i>38.1</i> | <i>45.3</i> |
| GUEST ARRIVALS ('000) | | | | | | | | |
| <i>March quarter 1993</i> | <i>75.9</i> | <i>39.4</i> | <i>117.5</i> | <i>32.1</i> | <i>30.8</i> | <i>24.6</i> | <i>43.8</i> | <i>364.1</i> |
| <i>1994—</i> | | | | | | | | |
| January | 28.9 | 16.9 | 50.3 | 10.8 | 12.8 | 10.1 | 16.4 | 146.2 |
| February | 24.6 | 13.8 | 40.8 | 9.4 | 12.0 | 7.6 | 14.6 | 122.8 |
| March | 26.0 | 16.4 | 44.7 | 11.2 | 13.2 | 7.3 | 21.0 | 139.7 |
| <i>March quarter 1994</i> | <i>79.4</i> | <i>47.1</i> | <i>135.8</i> | <i>31.5</i> | <i>37.9</i> | <i>25.0</i> | <i>51.9</i> | <i>408.6</i> |
| AVERAGE LENGTH OF STAY (days) | | | | | | | | |
| <i>March quarter 1993</i> | <i>3.5</i> | <i>2.8</i> | <i>2.7</i> | <i>1.8</i> | <i>3.5</i> | <i>1.4</i> | <i>2.4</i> | <i>2.7</i> |
| <i>1994—</i> | | | | | | | | |
| January | 3.4 | 2.4 | 2.5 | 2.1 | 3.1 | 1.5 | 2.0 | 2.6 |
| February | 3.4 | 2.6 | 2.5 | 2.2 | 3.0 | 1.4 | 2.1 | 2.6 |
| March | 3.4 | 2.5 | 2.5 | 2.1 | 2.9 | 1.4 | 1.8 | 2.5 |
| <i>March quarter 1994</i> | <i>3.4</i> | <i>2.5</i> | <i>2.5</i> | <i>2.1</i> | <i>3.0</i> | <i>1.4</i> | <i>1.9</i> | <i>2.6</i> |
| TAKINGS FROM ACCOMMODATION (\$'000) | | | | | | | | |
| <i>March quarter 1993</i> | <i>3,274</i> | <i>1,207</i> | <i>3,635</i> | <i>598</i> | <i>1,112</i> | <i>389</i> | <i>1,284</i> | <i>11,497</i> |
| <i>1994—</i> | | | | | | | | |
| January | 1,285 | 535 | 1,432 | 228 | 434 | 161 | 414 | 4,489 |
| February | 1,118 | 467 | 1,167 | 218 | 396 | 123 | 393 | 3,884 |
| March | 1,172 | 526 | 1,272 | 227 | 397 | 122 | 472 | 4,187 |
| <i>March quarter 1994</i> | <i>3,575</i> | <i>1,529</i> | <i>3,871</i> | <i>673</i> | <i>1,228</i> | <i>406</i> | <i>1,279</i> | <i>12,560</i> |

(a) Including Australian Capital Territory establishments.

EXPLANATORY NOTES

INTRODUCTION

1 This publication contains data, for Australia and each State and Territory, from a quarterly survey of tourist accommodation establishments. The period covered by the latest survey is the 3 months ended 31 March 1994.

SCOPE

2 Tourist accommodation establishments currently included in the survey comprise two groups:

- Establishments which provide predominantly short-term accommodation (i.e. for periods of less than 2 months) to the general public. These include:

Hotels, motels and guest houses, with facilities being hotels licensed to operate a public bar and motels, private hotels and guest houses all of which provide a bath (or shower) and toilet in most guest rooms and have breakfast available for guests.

NOTE: From December quarter 1993, hotel, motel and guest house establishments with fewer than five rooms have been formally excluded from the scope of this statistical collection. This change in scope resulted in the exclusion of 95 establishments which in the September quarter 1993 Survey aggregates for Australia represented 1.9 per cent of hotel, motel and guest house establishments but accounted for only 0.2 per cent of accommodation capacity and less than 0.1 per cent of occupancy and takings.

Holiday flats, units and houses (excluding establishments predominantly operated on a time share basis) which are operated by owners or managers who have sole letting rights to at least five flats, units or houses or by real estate agents for short-term letting. They are mainly self-contained in terms of cooking, bath (or shower) and toilet facilities and do not have breakfast available for guests. Data for holiday flats, units and houses include short-term owner occupation as well as paying guest occupation.

Visitor hostels which provide accommodation to visitors on a bed basis (rather than by the room). This category does not include establishments providing charity type accommodation (e.g. Salvation Army hostels) nor hotels, motels and guest houses without in-room facilities which provide accommodation on a per room basis.

- *Caravan parks* which provide either predominantly short-term (i.e. for periods of less than 2 months) or predominantly long-term (i.e. for periods of 2 months or more) accommodation to the general public and which provide powered sites for caravans and toilet, shower and laundry facilities for guests.

3 Data collected and published for each type of establishment (other than holiday flats, units and houses) include both long-term and short-term guests at these establishments.

4 Establishments which provide more than one type of accommodation (e.g. a motel with attached caravan park) are treated as two or more separate establishments. However, self-contained units, flats, cabins, etc. attached to hotels, motels or to caravan parks are included in the capacity for those establishments and not treated as separate holiday flat, unit or house establishments.

DEFINITIONS

5 *Number of establishments.* For hotels, motels and guest houses, caravan parks and visitor hostels, the number of establishments within the scope of the survey which operated for any part of the survey period, or which closed temporarily for the quarter for seasonal reasons.

6 *Number of letting entities.* For holiday flats, units and houses, the number of owners, managers or real estate agents within the scope of the survey who operated for any part of the survey period.

7 Capacity in terms of *Guest rooms, Bed spaces, Holiday units* or *Caravan park sites, etc.* is the maximum number available to accommodate paying guests during the survey period. Capacity closed temporarily for seasonal reasons is included.

8 *Bed spaces.* Three-quarter beds are counted as one bed space; double beds as two bed spaces. Cots are excluded.

EXPLANATORY NOTES —continued

DEFINITIONS —continued

9 *Total caravan park capacity* comprises *On-site vans, Other powered sites, Unpowered sites and Cabins, etc.*

10 *Room nights available.* The number of guest rooms available multiplied by the number of days for which they were available during the survey period. Includes operating periods only for establishments closing (other than for seasonal reasons) or opening during the survey period.

11 Occupancy in terms of *Room nights, Unit nights or Site nights occupied* refers to the total number of nights each guest room, holiday unit or caravan park site, etc. was occupied during the survey period.

NOTE: From September quarter 1992, caravan park sites, etc. permanently reserved for 2 months or more at the end of the survey period but only casually occupied by their tenants have been recorded continuously as *Site nights occupied* irrespective of whether the tenants of individual sites were in residence on any particular night. (See also paragraph 14 below). Previously, usage of these sites was recorded as *Site nights occupied* only when their tenants were in the park. Total site occupancy rates from September quarter 1992 are therefore not comparable with those from previous quarters.

12 Occupancy in terms of *Guest nights* refers to the total number of nights each paying guest stayed during the survey period.

13 *Sites occupied by long-term guests.* The total number of sites, etc. occupied at the end of the survey period by guests who have stayed continuously for 2 months or more.

14 *Other sites permanently reserved.* The total number of powered and unpowered sites, on-site vans and cabins, etc. continuously let for 2 months or more by the end of the survey period to tenants who occupy the sites only on a casual or sporadic basis. Separate data for this item are available only from September quarter 1992.

15 *Occupancy rates* represent occupancy expressed as a percentage of total capacity available during the survey period – e.g.

$$\text{Room occupancy rate (\%)} \text{ for the period} = \frac{\text{Room nights occupied}}{(\text{Guest rooms}) \times (\text{No. of days in the period})} \times 100$$

providing that, for establishments closing (other than for seasonal reasons) or opening during the survey period, the denominator of the above expression includes only operating periods.

16 *Guest arrivals.* The total number of paying guests counted only on the first night they stayed at the accommodation establishment.

17 *Unit lettings.* The total number of times a holiday flat, unit or house was occupied by a new tenant, counted only on the first night it was occupied by the new tenant.

18 *Average length of stay* is expressed in number of days and calculated:

- for hotels, motels and guest houses and for visitor hostels, by dividing *Guest nights* by *Guest arrivals* and
- for holiday flats, units and houses, by dividing *Unit nights occupied by Unit lettings.*

19 *Takings from accommodation.* Revenue received from the provision of accommodation. Takings from meals are excluded. Takings from accommodation for each month generally represent the takings received during that month. Where payments are received in advance of, or after, the provision of accommodation to guests, the monthly figure for takings from accommodation may not necessarily bear a direct relationship to the number of guests accommodated during the month. Rental and storage fees paid to caravan parks for the keeping of private vans in parks are included in the takings of the month they are received.

EXPLANATORY NOTES—*continued*

DEFINITIONS—*continued*

20 *Star grading.* The grading of hotels and motels with facilities based on the classification system used by members of the Australian Automobile Association (AAA). The gradings are allocated according to a points system based on the amenities and facilities available to guests. Details of the grading scheme are contained in the RACV-RAASA members' publication *Accommodation Australia*, or the individual tour guides produced by members of the AAA. For the purpose of classifying establishments to a star grading in this publication, 'half' star gradings are ignored (e.g. a two and a half star grading has been shown as two star).

21 *Employment.* The number of persons working at accommodation establishments at the end of the survey period (including working proprietors and those working on other than accommodation activities).

UNPUBLISHED STATISTICS

22 The ABS may make available on request certain unpublished tourist accommodation statistics. A charge may be made for this information.

RELATED PUBLICATIONS

23 Publications for Australia, and each State and Territory, are released by the respective offices of the ABS. Tourist accommodation statistics for past quarters are available on request. Other ABS publications which may be of interest include:

Directory of Tourism Statistics, 1991 (1130.0) (irregular)

Overseas Arrivals and Departures, Australia (3401.0) (monthly)

Tourism Indicators Australia (8634.0) (quarterly)

Selected Accommodation Establishments, Australia, 1984-85 (8636.0) (irregular)

Tourist Accommodation Atlas of Queensland, 1991 (8645.3) (irregular)

24 Current publications produced by the ABS are listed in the *Catalogue of Publications and Products, (1101.0)*. The ABS also issues the *Publications Advice (1105.0)* on Tuesdays and Fridays which lists publications to be released in the next few days. Both the *Catalogue* and *Publications Advice* are available from any ABS office.

SYMBOLS AND OTHER USAGES

n.a. not available
 n.p. not available for publication but included in totals where applicable
 r figure or series revised since previous issue
 .. not applicable
 — nil or rounded to zero

25 Where figures have been rounded, discrepancies may occur between totals and the sums of the component items.

ELECTRONIC SERVICES

DISCOVERY. The ABS intends discontinuing its statistical information service on DISCOVERY. Please contact Peter Davidson (Phone 06 252 6684) to discuss possible alternatives for acquiring statistics or if you wish to comment on this proposal.

PC-AUSSTATS. Thousands of up-to-date time series are available on this ABS on-line service. For further information, phone the PC-AUSSTATS Help Desk on (06) 252 6017.

TELESTATS. This service provides:

- foreign trade statistics tailored to users' requirements. Further information is available on (06) 252 5404
- text and tables for selected Main Economic Indicator publications. Further information is available on (06) 252 5405.

FLOPPY DISK SERVICE

Selected ABS statistics are available on floppy disk. Further information is available on (06) 252 6684.

IAN CASTLES
 Australian Statistician



For more information ...

The ABS publishes a wide range of statistics and other information on Australia's economic and social conditions. Details of what is available in various publications and other products can be found in the *ABS Catalogue of Publications and Products* available at all ABS Offices (see below for contact details).

Information Consultancy Service

Information tailored to special needs of clients can be obtained from the Information Consultancy Service available at ABS Offices (see Information Inquiries below for contact details).

National Dial-a-Statistic Line

0055 86 400

(Steadycom P/L: premium rate 25c/21.4 secs.)

This number gives 24-hour access, 365 days a year for a range of statistics.

Electronic Data Services

DISCOVERY (Key *656#): The ABS intends discontinuing its statistical information service on DISCOVERY. Please contact Peter Davidson (Phone 06 252 6684) to discuss possible alternatives for acquiring statistics or if you wish to comment on this proposal. For details on electronic data services available, contact Information Services in any of the ABS Offices (see Information Inquiries below for contact details).

Bookshops and Subscriptions

There are over 400 titles of various publications available from ABS bookshops in all ABS Offices (see below Bookshop Sales for contact details). The ABS also provides a subscription service through which nominated publications are provided by mail on a regular basis at no additional cost (telephone Publications Subscription Service toll free on 008 02 0608 Australia wide).

Sales and Inquiries

| Regional Offices | Information Inquiries | Bookshop Sales |
|-------------------------|------------------------------|-----------------------|
| SYDNEY (02) | 268 4611 | 268 4620 |
| MELBOURNE (03) | 615 7000 | 615 7829 |
| BRISBANE (07) | 222 6351 | 222 6350 |
| PERTH (09) | 323 5140 | 323 5307 |
| ADELAIDE (08) | 237 7100 | 237 7582 |
| HOBART (002) | 20 5800 | 20 5800 |
| CANBERRA (06) | 207 0326 | 207 0326 |
| DARWIN (089) | 43 2111 | 43 2111 |
| National Office | | |
| ACT (06) | 252 6007 | 008 020 608 |

ABS Email Addresses

| | |
|----------|--|
| Keylink | STAT.INFO/ABS |
| X.400 | (C:AU,A:TELMEMO,O:ABS,SN:INFO,FN:STAT) |
| Internet | STAT.INFO@ABS.TELEMEMO.AU |



© Commonwealth of Australia 1994

Recommended retail price: \$25.00



286350003944
ISSN 1031-0770